

**Specification for Tolerances  
for Precast Concrete**

An ACI Standard

Reported by ACI Innovation Task Group 7



**American Concrete Institute®**



American Concrete Institute®  
Advancing concrete knowledge

First printing  
November 2009  
Errata as of November 13, 2017

## Specification for Tolerances for Precast Concrete

Copyright by the American Concrete Institute, Farmington Hills, MI. All rights reserved. This material may not be reproduced or copied, in whole or part, in any printed, mechanical, electronic, film, or other distribution and storage media, without the written consent of ACI.

The technical committees responsible for ACI committee reports and standards strive to avoid ambiguities, omissions, and errors in these documents. In spite of these efforts, the users of ACI documents occasionally find information or requirements that may be subject to more than one interpretation or may be incomplete or incorrect. Users who have suggestions for the improvement of ACI documents are requested to contact ACI. Proper use of this document includes periodically checking for errata at [www.concrete.org/committees/errata.asp](http://www.concrete.org/committees/errata.asp) for the most up-to-date revisions.

ACI committee documents are intended for the use of individuals who are competent to evaluate the significance and limitations of its content and recommendations and who will accept responsibility for the application of the material it contains. Individuals who use this publication in any way assume all risk and accept total responsibility for the application and use of this information.

All information in this publication is provided “as is” without warranty of any kind, either express or implied, including but not limited to, the implied warranties of merchantability, fitness for a particular purpose or non-infringement.

ACI and its members disclaim liability for damages of any kind, including any special, indirect, incidental, or consequential damages, including without limitation, lost revenues or lost profits, which may result from the use of this publication.

It is the responsibility of the user of this document to establish health and safety practices appropriate to the specific circumstances involved with its use. ACI does not make any representations with regard to health and safety issues and the use of this document. The user must determine the applicability of all regulatory limitations before applying the document and must comply with all applicable laws and regulations, including but not limited to, United States Occupational Safety and Health Administration (OSHA) health and safety standards.

**Order information:** ACI documents are available in print, by download, on CD-ROM, through electronic subscription, or reprint and may be obtained by contacting ACI.

Most ACI standards and committee reports are gathered together in the annually revised *ACI Manual of Concrete Practice* (MCP).

**American Concrete Institute**  
**38800 Country Club Drive**  
**Farmington Hills, MI 48331**  
**U.S.A.**

**Phone: 248-848-3700**  
**Fax: 248-848-3701**

[www.concrete.org](http://www.concrete.org)

ISBN 978-0-87031-355-4

# Specification for Tolerances for Precast Concrete

An ACI Standard

Reported by ACI Innovation Task Group 7

Charles S. Hanskat  
Chair

Nicholas J. Carino  
Ned M. Cleland  
Harry A. Gleich

W. Calvin McCall  
David N. Peterson  
Eldon G. Tipping

*This Reference Specification provides standard tolerances for precast concrete construction. It covers dimensional tolerances for precast concrete members used in building construction, and it covers erection tolerances for these members. This document is intended to be adopted by reference in Contract Documents. The Specifier supplements the provisions of this Reference Specification as needed by specifying project-specific requirements in Contract Documents.*

**Keywords:** alignment; construction; erection tolerances; precast concrete; prestressed concrete; product tolerances; reinforcement; specification.

## CONTENTS

*(mandatory portion follows)*

### **Section 1—General requirements, p. ITG-7M-2**

- 1.1—Scope
- 1.2—Requirements
- 1.3—Definitions
- 1.4—Referenced standards

### **Section 2—Structural product tolerances, p. ITG-7M-5**

- 2.1—Scope
- 2.2—Tolerances

### **Section 3—Structural product erection tolerances, p. ITG-7M-21**

- 3.1—Scope
- 3.2—Tolerances

### **Section 4—Nonstructural architectural product tolerances, p. ITG-7M-29**

- 4.1—Scope
- 4.2—Tolerances

### **Section 5—Nonstructural architectural product erection tolerances, p. ITG-7M-35**

- 5.1—Scope
- 5.2—Tolerances

*(nonmandatory portion follows)*

### **Notes to Specifier, p. ITG-7M-37**

General notes

### **Foreword to checklists, p. ITG-7M-37**

### **Mandatory Requirements Checklist, p. ITG-7M-37**

### **Optional Requirements Checklist, p. ITG-7M-37**

*(mandatory portion follows)*

---

ACI ITG-7M-09 was adopted August 13, 2009, and published November 2009.  
Copyright © 2009, American Concrete Institute.

All rights reserved including rights of reproduction and use in any form or by any means, including the making of copies by any photo process, or by electronic or mechanical device, printed, written, or oral, or recording for sound or visual reproduction or for use in any knowledge or retrieval system or device, unless permission in writing is obtained from the copyright proprietors.

## SECTION 1—GENERAL REQUIREMENTS

### 1.1—Scope

**1.1.1 Work specified**—This Specification designates standard tolerances for structural and architectural precast concrete members. Tolerances are provided for individual members and their erection. The indicated tolerances govern unless otherwise specified.

**1.1.2 Work not specified**—Interface tolerances between precast concrete members and cast-in-place concrete construction are specified in ACI 117.

**1.1.3 Units**—Values in this specification are stated in SI units. A companion specification in inch-pound units is also available.

### 1.2—Requirements

**1.2.1 Accumulation of tolerances**—Tolerances are not cumulative. Accumulations of individual tolerances on a single item shall not be used to increase an established tolerance. Individual tolerances are unique to their specific application and shall not be combined with other tolerances to form a tolerance envelope. The most restrictive tolerance controls.

**1.2.2 Sign definition**—Plus (+) tolerance increases the dimension or elevation to which it applies. Minus (−) tolerance decreases the dimension or elevation to which it applies.

**1.2.3 Exceeding tolerances**—If the product and erection tolerances in this document are exceeded, the member or the modified assembly shall be accepted if the following conditions are met:

- The Licensed Design Professional determines that the structural requirements have been satisfied.
- The Owner or Architect accepts the appearance of exposed surfaces.

### 1.3—Definitions

**Architect/Engineer**—the architect, engineer, architectural firm, or engineering firm developing Contract Documents or administering the Work under Contract Documents, or both.

**bearing width overhang**—distance from the side of precast concrete member to side of bearing media, that is, pad or shim, measured perpendicular to the direction of the span, as shown in Fig. 1.1.

**blockout**—opening through the member for conduit, piping, ductwork, connections, or structural framing.

**bowing**—the deviation of the edge or surface of a planar wall member, in the out-of-plane direction, from a line passing through any two corners of the member, as shown in Fig. 1.2.

**camber**—deviation of the bottom of the member from a line between the bottom ends of that member due to the effects of the prestress force.

**Contract Documents**—a set of documents supplied by Owner to Contractor as the basis for construction; these documents contain contract forms, contract conditions, specifications, drawings, addenda, and contract changes.

**control surface, primary**—the member surface deemed to be critical to the fit and function of interfacing members or to the appearance of the completed project.

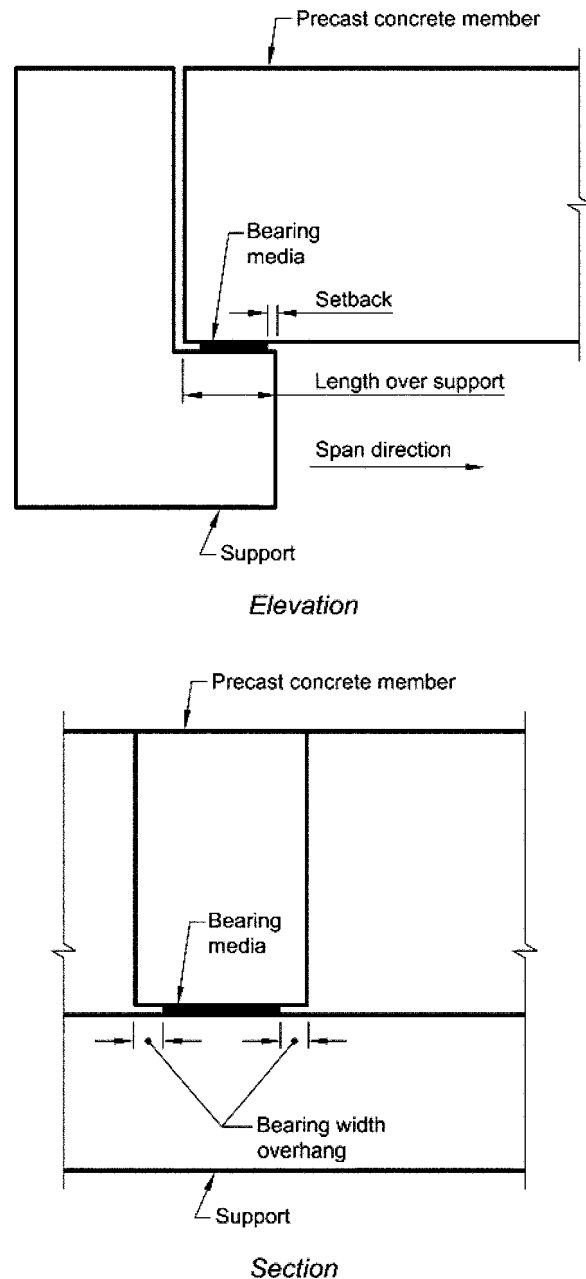


Fig. 1.1—Length over support and bearing width overhang.

**cover**—the least distance between the surface of embedded reinforcement and the surface of the concrete.

**deviation**—distance from an established reference point, line, or surface measured perpendicular to the line or surface of the member.

**deviation from plane**—distance between a point on a reference plane and the corresponding point on the actual surface of the member.

**deviation, horizontal**—distance from an established point, line, or surface measured perpendicular to a vertical line through the point of interest.

**deviation, vertical**—distance from an established point, line, or surface measured perpendicular to a horizontal line through the point of interest.

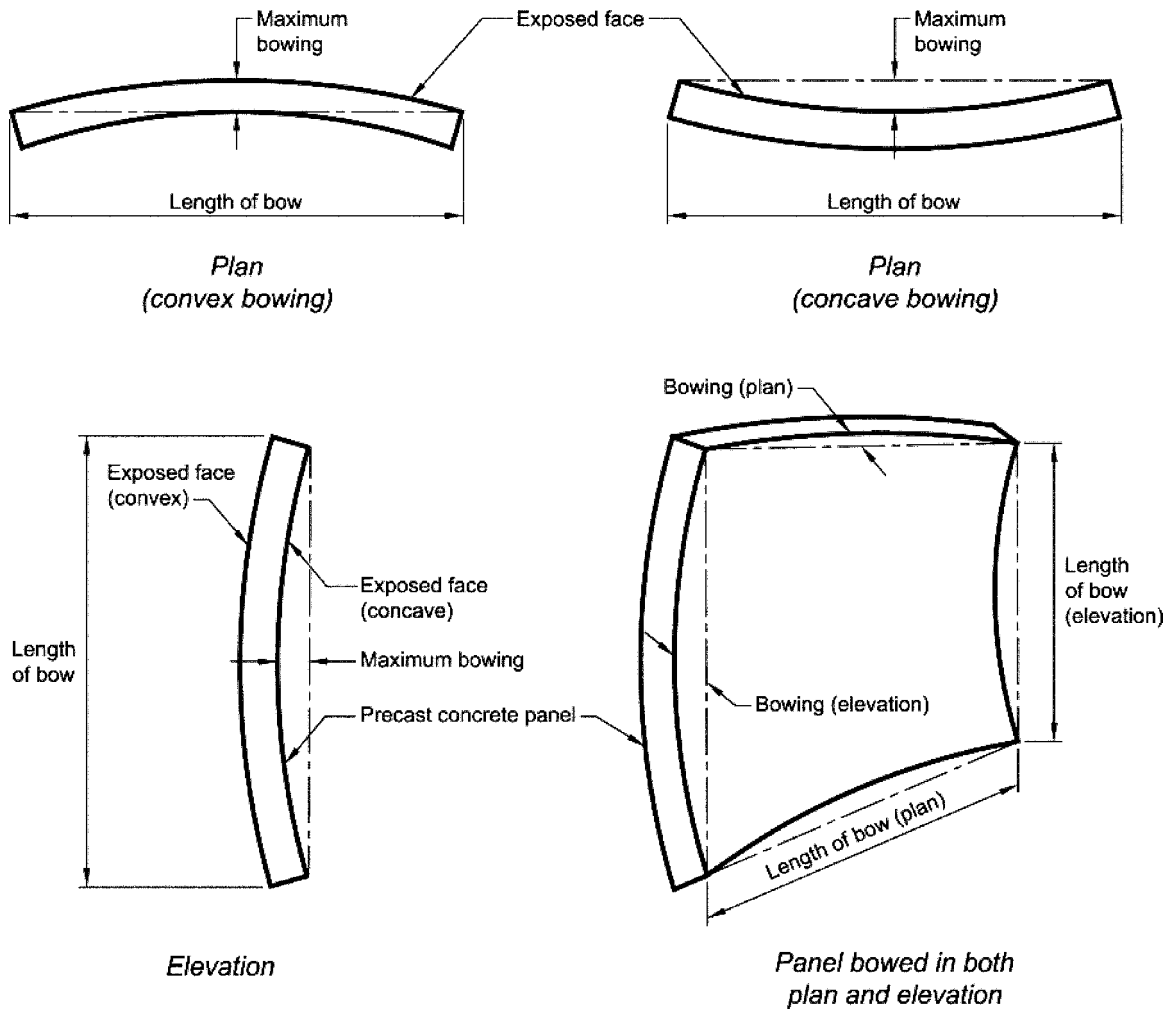


Fig. 1.2—Panel bowing.

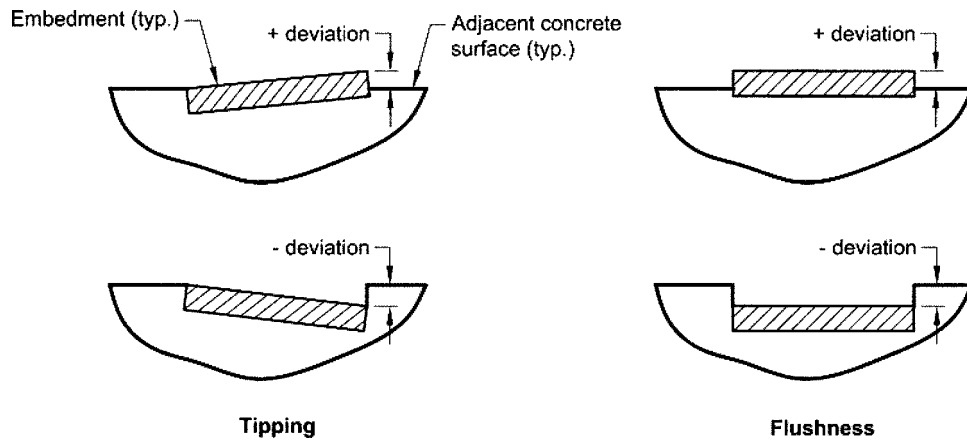


Fig. 1.3—Tipping and flushness.

**embedment**—item embedded in the concrete to transmit applied loads to the structure.

**exposed**—intended by the Contract Documents to be visible during normal occupancy.

**flushness**—deviation of the embedment surface from the surrounding adjacent concrete surface, as shown in Fig. 1.3.

**insert**—an embedment that uses a threaded device or strap anchor to connect the member to the surrounding structure or other work.

**length over support**—length of precast member over the support measured in the direction of the span, as shown in Fig. 1.1.

**Licensed Design Professional**—an individual who is licensed to practice structural design as defined by the