



Safety of machinery

Part 2802: Application of protective equipment to detect the presence of persons



This Australian Standard® was prepared by Committee SF-041, Safety of Machinery. It was approved on behalf of the Council of Standards Australia on 4 July 2017. This Standard was published on 28 July 2017.

The following are represented on Committee SF-041:

- Australian Industry Group
 - Australian Manufacturing Workers Union
 - Australian Packaging and Processing Machinery Association
 - Department of Industry, Skills and Regional Development, NSW
 - Engineers Australia
 - Human Factors and Ergonomics Society of Australia
 - Institute of Instrumentation, Control and Automation, Australia
 - National Safety Council of Australia
 - Safety Institute of Australia
 - SafeWork NSW
 - Swinburne University of Technology
 - University of Melbourne
 - Workplace Health and Safety Queensland
 - WorkSafe Victoria
-

This Standard was issued in draft form for comment as DR AS 4024.2802:2017.

Standards Australia wishes to acknowledge the participation of the expert individuals that contributed to the development of this Standard through their representation on the Committee and through the public comment period.

Keeping Standards up-to-date

Australian Standards® are living documents that reflect progress in science, technology and systems. To maintain their currency, all Standards are periodically reviewed, and new editions are published. Between editions, amendments may be issued.

Standards may also be withdrawn. It is important that readers assure themselves they are using a current Standard, which should include any amendments that may have been published since the Standard was published.

Detailed information about Australian Standards, drafts, amendments and new projects can be found by visiting www.standards.org.au

Standards Australia welcomes suggestions for improvements, and encourages readers to notify us immediately of any apparent inaccuracies or ambiguities. Contact us via email at mail@standards.org.au, or write to Standards Australia, GPO Box 476, Sydney, NSW 2001.

Australian Standard[®]

Safety of machinery

Part 2802: Application of protective equipment to detect the presence of persons

First published as AS 4024.2802:2017.

COPYRIGHT

© Standards Australia Limited

All rights are reserved. No part of this work may be reproduced or copied in any form or by any means, electronic or mechanical, including photocopying, without the written permission of the publisher, unless otherwise permitted under the Copyright Act 1968.

Published by SAI Global Limited under licence from Standards Australia Limited, GPO Box 476, Sydney, NSW 2001, Australia

ISBN 978 1 76035 858 7

PREFACE

This Standard was prepared by the Standards Australia Committee SF-041. Safety of Machinery.

The objective of this Standard is to specify the requirements for the selection, positioning, configuration and commissioning of protective equipment to detect the presence of persons in order to protect those persons from dangerous part(s) of machinery in industrial applications.

This Standard is identical with, and has been reproduced from IEC TS 62046:2008, *Safety of machinery—Application of protective equipment to detect the presence of persons*.

As this Standard is reproduced from an International Technical Specification, the following applies:

- (a) In the source text ‘this Technical Specification’ should read ‘this Australian Standard’.
- (b) A full point substitutes for a comma when referring to a decimal marker.

None of the normative references in the source document have been adopted as Australian or Australian/New Zealand Standards.

CONTENTS

FOREWORD.....	6
INTRODUCTION.....	8
1 Scope.....	10
2 Normative references	10
3 Terms, definitions and abbreviations	11
3.1 Terms and definitions	11
3.2 Abbreviations	18
4 Selection of protective measures.....	18
4.1 Procedure (relationship with ISO 12100 (all parts)).....	18
4.2 Machine characteristics	19
4.2.1 Suitability of protective equipment	19
4.2.2 Suitability of protective equipment as a trip device	20
4.3 Environmental characteristics.....	20
4.4 Uses of protective equipment	21
4.4.1 General	21
4.4.2 Trip device	22
4.4.3 Presence sensing device	24
4.4.4 Combination trip and presence sensing device	24
4.5 Human characteristics	24
4.5.1 General	24
4.5.2 Approach speed (K).....	25
4.5.3 Penetration/encroachment factor (C)	25
4.5.4 Ability to circumvent protective equipment.....	25
4.6 Protective equipment characteristics	26
4.6.1 ESPEs.....	26
4.6.2 Pressure sensitive mats and floors	28
4.7 Machine control system functions associated with the application of protective equipment.....	28
4.7.1 General	28
4.7.2 Stopping performance monitoring (SPM)	28
4.7.3 Muting	28
4.7.4 Reinitiation of cyclic operation by the protective equipment	29
4.7.5 Start interlock	29
4.7.6 Restart interlock	29
4.7.7 Blanking	29
4.7.8 External Device Monitoring (EDM).....	29
4.7.9 Provision of machine control functions.....	30
5 General application requirements	30
5.1 Positioning and configuration of the protective equipment detection zone.....	30
5.2 Integration with the safety-related control system.....	30
5.3 Performance of protective equipment	30
5.3.1 General	30
5.3.2 Classification of protective equipment.....	31
5.4 Stopping performance monitoring.....	32
5.5 Muting.....	33

5.5.1	General	33
5.5.2	Muting to allow access by persons	34
5.5.3	Muting to allow access by materials.....	34
5.5.4	Mute dependent override.....	34
5.6	Reinitiation of cyclic operation by the protective equipment.....	35
5.6.1	General	35
5.6.2	Particular requirements for press applications	36
5.7	Start interlock.....	37
5.8	Restart interlock	37
5.9	Blanking	37
6	Particular application requirements for specific protective equipment	37
6.1	AOPDs.....	37
6.1.1	General	37
6.1.2	Light beam device(s)	38
6.1.3	Light curtains.....	39
6.2	AOPDDRs	40
6.3	PIPDs.....	41
6.3.1	General	41
6.3.2	Mobile applications.....	42
6.4	Pressure-sensitive mats and floors.....	42
6.4.1	Pressure sensitive floors	42
6.4.2	Pressure sensitive mats.....	42
7	Inspection and test	44
7.1	General.....	44
7.2	Initial inspection and test.....	44
7.3	Periodic inspection and test.....	45
7.4	Functional checks	45
8	Information for safe use.....	47
Annex A (informative) Examples of interfacing ESPEs to a machine		48
Annex B (informative) Summary of minimum type test requirements for various protective equipment		55
Annex C (informative) Application examples		59
Annex D (informative) Protective devices for the detection of the position of a person		65
Annex E (informative) Additional recommendations for the application of AOPDDRs		68
Annex F (informative) Additional recommendations for the configuration of photoelectric muting sensors when used to allow access by materials		75
Annex G (informative) Periodic test intervals for Type 2 ESPE.....		99
Bibliography.....		102
Figure 1 – Relationship of this Technical Specification to other standards		9
Figure 2 – Risk reduction process (simplified version of Figure 2 of ISO 12100-1)		19
Figure 3 – Detection principle of through-beam AOPD		26
Figure 4 – Through-beam AOPD using mirrors.....		26
Figure 5 – Retro-reflective AOPD.....		27

Figure 6 – Detection principle of AOPDDR.....	27
Figure 7 – Example of the effect of reflective surfaces	38
Figure 8 – Example of use of blanking	40
Figure A.1 – Integration with the control system.....	48
Figure A.2 – Example of integration – Category 4	49
Figure A.3 – Example of integration – Category 4	50
Figure A.4 – Example of an incorrect integration – Category 4	50
Figure A.5 – Example of an incorrect integration – Category 4	51
Figure A.6 – Example of integration of an ESPE: Category 4	51
Figure A.7 – Example of integration – Category 3	52
Figure A.8 – Example of an incorrect integration – Category 3	53
Figure A.9 – Integration with a safety-related control system	54
Figure C.1 – Protective equipment used as a trip device.....	59
Figure C.2 – Protective equipment used as combined trip and presence sensing device	59
Figure C.3 – Protective equipment used as a combined trip and presence sensing device.....	60
Figure C.4 – Horizontal AOPD	61
Figure C.5 – Vertical AOPD	62
Figure C.6 – Increased separation distance	63
Figure C.7 – Additional mechanical protection	63
Figure C.8 – Use of a trip device.....	64
Figure E.1 – Example of the use of an AOPDDR on machinery.....	69
Figure E.2 – Example of the use of an AOPDDR on machinery.....	69
Figure E.3 – Example of the use of an AOPDDR on an AGV.....	70
Figure E.4 – Use of an AOPDDR as a whole-body trip device – Example 1	71
Figure E.5 – Use of an AOPDDR as a whole-body trip device – Example 2.....	72
Figure E.6 – Use of an AOPDDR as parts of a body trip device – Example 1	73
Figure E.7 – Use of an AOPDDR as parts of a body trip device – Example 2	73
Figure F.1 – T configuration with timing control.....	75
Figure F.2 – L configuration with timing control.....	76
Figure F.3 – Parallel beams with timing or sequence control.....	76
Figure F.4 – Four parallel beams with timing control	77
Figure F.5 – Positioning of the muting sensors to avoid muting by a person's body (plan view).....	78
Figure F.6 – Positioning of the muting sensors (side view).....	78
Figure F.7 – Timing diagram; four parallel beams with timing control	79
Figure F.8 – Four beams: Timing control and crossed beams (not recommended)	79
Figure F.9 - Timing diagram; four beams; sequence control.....	80
Figure F.10 – Four beams with additional swinging doors	81
Figure F.11 – Timing diagram for mute enable signal (mute enable activated)	81
Figure F.12 – Timing diagram for mute enable signal (mute enable not activated)	82
Figure F.13 – Avoidance of manipulation of the muting function (plan view).....	82
Figure F.14 – Avoidance of manipulation of the muting function (front view)	83

Figure F.15 – Connection of the muting sensors	83
Figure F.16 – Two sensors – Crossed beams	84
Figure F.17 – Two sensors – Crossed beams (risk of entering the hazardous zone without detection when $x > 200$ mm)	85
Figure F.18 – Positioning of the muting sensors.....	86
Figure F.19 – Detection of the test object	86
Figure F.20 – Timing diagram for two crossed beams (normal operation).....	87
Figure F.21 – Timing diagram for two crossed beams (timeout)	87
Figure F.22 – Single swinging doors in combination with a two-beam muting system (correct position).....	88
Figure F.23 Single swinging doors (incorrect position)	89
Figure F.24 – Single swinging doors (incorrect position)	90
Figure F.25 – Height of crossing point	91
Figure F.26 – Interruption of the beam	92
Figure F.27 – Two muting sensor beams – exit only.....	93
Figure F.28 – Timing diagram; two muting sensor beams – exit only, muting terminated by the ESPE	93
Figure F.29 – Timing diagram; two muting sensor beams – exit only, muting terminated by the 4 s timer.....	94
Figure F.30 – Timing diagram, muting terminated by the muting timeout.....	94
Figure F.31 – Production line incorporating two machines.....	95
Figure F.32 – Production line incorporating two machines.....	96
Figure F.33 – Example of an external override in a category 4 control system	96
Figure F.34 – Example of an external override in a category 3 control system	97
Figure F.35 – Example of an external override at a work area with two access points and two separate muting functions – Category 4	98
Figure G.1 – Failure occurrence after approach	100
Figure G.2 – Approach after a failure	100
Figure G.3 – Average time of approach.....	100
Table 1 – Beam heights for light beam devices	39
Table B.1 – List of environmental considerations to assist the selection of a protective equipment.....	56
Table F.1 – Truth table, four beams; sequence control.....	80

FOREWORD

- 1) The International Electrotechnical Commission (IEC) is a worldwide organization for standardization comprising all national electrotechnical committees (IEC National Committees). The object of IEC is to promote international co-operation on all questions concerning standardization in the electrical and electronic fields. To this end and in addition to other activities, IEC publishes International Standards, Technical Specifications, Technical Reports, Publicly Available Specifications (PAS) and Guides (hereafter referred to as "IEC Publication(s)"). Their preparation is entrusted to technical committees; any IEC National Committee interested in the subject dealt with may participate in this preparatory work. International, governmental and non-governmental organizations liaising with the IEC also participate in this preparation. IEC collaborates closely with the International Organization for Standardization (ISO) in accordance with conditions determined by agreement between the two organizations.
- 2) The formal decisions or agreements of IEC on technical matters express, as nearly as possible, an international consensus of opinion on the relevant subjects since each technical committee has representation from all interested IEC National Committees.
- 3) IEC Publications have the form of recommendations for international use and are accepted by IEC National Committees in that sense. While all reasonable efforts are made to ensure that the technical content of IEC Publications is accurate, IEC cannot be held responsible for the way in which they are used or for any misinterpretation by any end user.
- 4) In order to promote international uniformity, IEC National Committees undertake to apply IEC Publications transparently to the maximum extent possible in their national and regional publications. Any divergence between any IEC Publication and the corresponding national or regional publication shall be clearly indicated in the latter.
- 5) IEC provides no marking procedure to indicate its approval and cannot be rendered responsible for any equipment declared to be in conformity with an IEC Publication.
- 6) All users should ensure that they have the latest edition of this publication.
- 7) No liability shall attach to IEC or its directors, employees, servants or agents including individual experts and members of its technical committees and IEC National Committees for any personal injury, property damage or other damage of any nature whatsoever, whether direct or indirect, or for costs (including legal fees) and expenses arising out of the publication, use of, or reliance upon, this IEC Publication or any other IEC Publications.
- 8) Attention is drawn to the Normative references cited in this publication. Use of the referenced publications is indispensable for the correct application of this publication.
- 9) Attention is drawn to the possibility that some of the elements of this IEC Publication may be the subject of patent rights. IEC shall not be held responsible for identifying any or all such patent rights.

The main task of IEC technical committees is to prepare International Standards. In exceptional circumstances, a technical committee may propose the publication of a technical specification when

- the required support cannot be obtained for the publication of an International Standard, despite repeated efforts, or
- The subject is still under technical development or where, for any other reason, there is the future but no immediate possibility of an agreement on an International Standard.

Technical specifications are subject to review within three years of publication to decide whether they can be transformed into International Standards.

IEC 62046, which is a technical specification, has been prepared by IEC technical committee 44: Safety of machinery – Electrotechnical aspects.

This second edition cancels and replaces the first edition issued in 2004. This second edition constitutes a general technical revision of the first edition, and includes further examples of interfacing and muting techniques.

The text of this technical specification is based on the following documents:

Enquiry draft	Report on voting
44/534/DTS	44/552B/RVC

Full information on the voting for the approval of this technical specification can be found in the report on voting indicated in the above table.

This publication has been drafted in accordance with the ISO/IEC Directives, Part 2.

The committee has decided that the contents of this publication will remain unchanged until the maintenance result date indicated on the IEC web site under "<http://webstore.iec.ch>" in the data related to the specific publication. At this date, the publication will be

- transformed into an International standard,
- reconfirmed,
- withdrawn,
- replaced by a revised edition, or
- amended.

INTRODUCTION

This Technical Specification provides information on the application of protective equipment, which employs a sensing device(s) to detect person(s) in or approaching an area, in order to reduce or minimize a risk from hazardous parts of machinery, without providing a physical barrier.

The objective of this specification is to assist: standards writing committees responsible for developing machine standards ("C" Standards), machine designers, manufacturers and refurbishers, machine safety certification organizations, workplace authorities and others on the proper application of protective equipment to machinery.

Figures 1 and 2 show the general context and the intended use of this specification.

Clauses 1 to 5, 7 and 8 of this specification apply to all protective equipment included in the scope, Clause 6 contains guidance for the application of specific kinds of protective equipment.

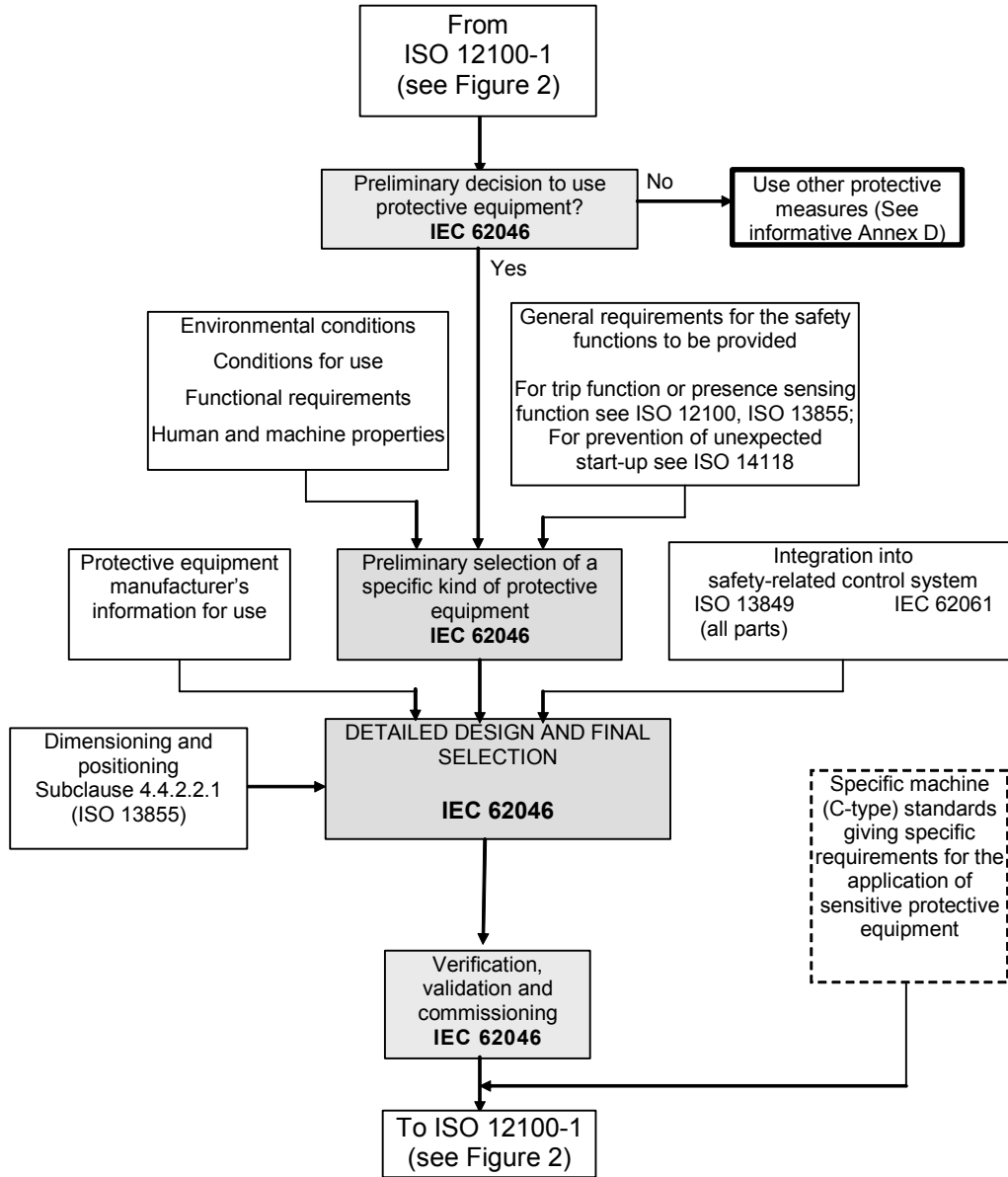


Figure 1 – Relationship of this Technical Specification to other standards

(see also Figure 2)

AUSTRALIAN STANDARD

Safety of machinery

Part 2802:

Application of protective equipment to detect the presence of persons

1 Scope

This Technical Specification specifies requirements for the selection, positioning, configuration and commissioning of protective equipment to detect the presence of persons in order to protect those persons from dangerous part(s) of machinery in industrial applications. This standard covers the application of electro-sensitive protective equipment (ESPE) specified in IEC 61496 (all parts) and pressure sensitive mats and floors specified in ISO 13856-1.

It takes into account the characteristics of the machinery, the protective equipment, the environment and human interaction by persons of 14 years and older.

2 Normative references

The following referenced documents are indispensable for the application of this document. For dated references, only the edition cited applies. For undated references, the latest edition of the referenced document (including any amendments) applies.

IEC 60204-1, *Safety of machinery – Electrical equipment of machines – Part 1: General requirements*

IEC 61496-1:2004, *Safety of Machinery – Electro-sensitive protective equipment – General requirements and tests*

IEC 61496-2:1997, *Safety of machinery – Electro-sensitive protective equipment – Part 2: Particular requirements for equipment using active opto-electronic protective devices (AOPDs)*

IEC 61496-3:2001, *Safety of machinery – Electro-sensitive protective equipment – Particular requirements for equipment for Active Opto-Electronic Protective Devices responsive to Diffuse Reflection (AOPDDR)*

IEC 62061, *Safety of machinery – Functional safety of safety related electrical, electronic and programmable control systems*

ISO 12100-1: 2003, *Safety of machinery – Basic concepts, general principles for design – Part 1: Basic terminology, methodology*

ISO 12100-2: 2003, *Safety of machinery – Basic concepts, general principles for design – Part 2: Technical principles*

ISO 13849 (all parts), *Safety of Machinery – Safety-related parts of control systems*

ISO 13855:2002, *Safety of machinery – Positioning of protective equipment with respect to the approach speeds of parts of the human body*

ISO 13856-1:2001, *Safety of machinery – Pressure-sensitive protective devices – Part 1: General principles for design and testing of pressure-sensitive mats and pressure-sensitive floors*

ISO 14121 (all parts), *Safety of machinery – Risk assessment*