

Australian/New Zealand Standard™

**Geographic information — Referencing  
by coordinates**



AS/NZS ISO 19111:2019

This Joint Australian/New Zealand Standard™ was prepared by Joint Technical Committee IT-004, Geographical Information/Geomatics. It was approved on behalf of the Council of Standards Australia on 3 May 2019 and by the New Zealand Standards Approval Board on 7 May 2019.

This Standard was published on 22 May 2019.

The following are represented on Committee IT-004:

- ANZLIC — the Spatial Information Council
- Australian Antarctic Division
- Bureau of Meteorology (Australian Government)
- Australian Bureau of Statistics
- Australian Maritime Safety Authority
- CSIRO
- Curtin University
- Department of Defence (Australian Government)
- Department of Human Services (Australian Government)
- Geoscience Australia
- Science New Zealand
- Spatial Industries Business Association (Australia)
- University of Melbourne

This Standard was issued in draft form for comment as DR AS/NZS ISO 19111:2019.

### **Keeping Standards up-to-date**

Ensure you have the latest versions of our publications and keep up-to-date about Amendments, Rulings, Withdrawals, and new projects by visiting:

[www.standards.org.au](http://www.standards.org.au)

[www.standards.govt.nz](http://www.standards.govt.nz)

ISBN 978 1 76072 468 9

Australian/New Zealand Standard™

# **Geographic information — Referencing by coordinates**

Originated as AS/NZS ISO 19111:2004.  
Previous edition 2008.  
Third edition 2019.

## **COPYRIGHT**

© ISO 2019 — All rights reserved

© Standards Australia Limited/the Crown in right of New Zealand, administered by the New Zealand Standards Executive 2019

All rights are reserved. No part of this work may be reproduced or copied in any form or by any means, electronic or mechanical, including photocopying, without the written permission of the publisher, unless otherwise permitted under the Copyright Act 1968 (Cth) or the Copyright Act 1994 (New Zealand).

## Preface

This Standard was prepared by the Joint Standards Australia/Standards New Zealand Committee IT-004, Geographical Information/Geomatics, to supersede AS/NZS ISO 19111:2008, *Geographic information — Spatial referencing by coordinates*.

The objective of this Standard is to define the conceptual schema for the description of referencing by coordinates. It describes the minimum data required to define coordinate reference systems. This document supports the definition of—

- (a) spatial coordinate reference systems where coordinate values do not change with time. The system may—
  - (i) be geodetic and apply on a national or regional basis; or
  - (ii) apply locally such as for a building or construction site; or
  - (iii) apply locally to an image or image sensor; or
  - (iv) be referenced to a moving platform such as a car, a ship, an aircraft or a spacecraft. Such a coordinate reference system can be related to a second coordinate reference system which is referenced to the Earth through a transformation that includes a time element;
- (b) spatial coordinate reference systems in which coordinate values of points on or near the surface of the earth change with time due to tectonic plate motion or other crustal deformation. Such dynamic systems include time evolution, however they remain spatial in nature;
- (c) parametric coordinate reference systems which use a non-spatial parameter that varies monotonically with height or depth;
- (d) temporal coordinate reference systems which use dateTime, temporal count or temporal measure quantities that vary monotonically with time; and
- (e) mixed spatial, parametric or temporal coordinate reference systems.

This Standard is identical with, and has been reproduced from, ISO 19111:2019, *Geographic information — Referencing by coordinates*.

As this document has been reproduced from an International Standard, a full point substitutes for a comma when referring to a decimal marker.

Australian or Australian/New Zealand Standards that are identical adoptions of international normative references may be used interchangeably. Refer to the online catalogue for information on specific Standards.

The terms “normative” and “informative” are used in Standards to define the application of the appendices or annexes to which they apply. A “normative” appendix or annex is an integral part of a Standard, whereas an “informative” appendix or annex is only for information and guidance.

# Contents

Preface .....	ii
Foreword .....	v
Introduction .....	vii
<b>1 Scope .....</b>	<b>1</b>
<b>2 Normative references .....</b>	<b>1</b>
<b>3 Terms, definitions, symbols and abbreviated terms .....</b>	<b>2</b>
3.1 Terms and definitions .....	2
3.2 Symbols .....	11
3.3 Abbreviated terms .....	11
<b>4 Conformance requirements .....</b>	<b>12</b>
<b>5 Conventions .....</b>	<b>13</b>
5.1 Unified Modeling Language notation .....	13
5.2 Attribute status .....	13
<b>6 Referencing by coordinates — Data model overview .....</b>	<b>14</b>
<b>7 Coordinates package .....</b>	<b>15</b>
7.1 Relationship between coordinates and coordinate reference system .....	15
7.2 Coordinate reference system identification .....	16
7.3 Requirements for coordinate metadata .....	17
7.3.1 Requirements class: Static CRS coordinate metadata .....	17
7.3.2 Requirements class: Dynamic CRS coordinate metadata .....	17
7.4 UML schema for the Coordinates package .....	17
7.5 UML schema for change of coordinates .....	19
<b>8 Common Classes package .....</b>	<b>21</b>
8.1 General attributes .....	21
8.1.1 Introduction .....	21
8.1.2 Name and alias .....	21
8.1.3 Identifier .....	21
8.1.4 Scope and Domain of Validity .....	21
8.2 UML schema for the Common Classes package .....	22
<b>9 Coordinate Reference Systems package .....</b>	<b>26</b>
9.1 Coordinate reference system .....	26
9.1.1 General .....	26
9.1.2 Principal subtypes of coordinate reference system .....	26
9.2 Derived coordinate reference system .....	27
9.2.1 General .....	27
9.2.2 Projected coordinate reference system .....	27
9.3 Compound coordinate reference system .....	28
9.3.1 General .....	28
9.3.2 Spatial compound coordinate reference system .....	28
9.3.3 Spatio-temporal compound coordinate reference system .....	28
9.3.4 Spatio-parametric compound coordinate reference system .....	28
9.3.5 Spatio-parametric-temporal compound coordinate reference system .....	28
9.4 UML schema for the Coordinate Reference Systems package .....	29
<b>10 Coordinate Systems package .....</b>	<b>37</b>
10.1 Coordinate system — General .....	37
10.2 Parametric coordinate system .....	38
10.3 Temporal coordinate system .....	38
10.4 Coordinate system axis .....	39
10.5 UML schema for the Coordinate Systems package .....	40

<b>11</b>	<b>Datums (reference frames) package</b> .....	<b>49</b>
11.1	Types of datum and reference frame.....	49
11.2	Geodetic reference frame.....	50
11.2.1	Prime meridian.....	50
11.2.2	Ellipsoid.....	50
11.3	Dynamic reference frame.....	50
11.4	Datum ensemble.....	50
11.5	Temporal datum.....	50
11.6	UML schema for the Datums package.....	51
<b>12</b>	<b>Coordinate Operations package</b> .....	<b>59</b>
12.1	General characteristics of coordinate operations.....	59
12.2	UML schema for the Coordinate Operations package.....	60
<b>Annex A</b>	(normative) <b>Abstract test suite</b> .....	<b>73</b>
<b>Annex B</b>	(informative) <b>Spatial referencing by coordinates — Geodetic concepts</b> .....	<b>78</b>
<b>Annex C</b>	(informative) <b>Spatial referencing by coordinates — Context for modelling</b> .....	<b>83</b>
<b>Annex D</b>	(informative) <b>Temporal referencing by coordinates — Context for modelling</b> .....	<b>97</b>
<b>Annex E</b>	(informative) <b>Examples</b> .....	<b>101</b>
<b>Annex F</b>	(informative) <b>Recommended best practice for interfacing to ISO 19111</b> .....	<b>140</b>
<b>Annex G</b>	(informative) <b>Backward compatibility with ISO 19111:2007</b> .....	<b>141</b>
	<b>Bibliography</b> .....	<b>146</b>

## Foreword

ISO (the International Organization for Standardization) is a worldwide federation of national standards bodies (ISO member bodies). The work of preparing International Standards is normally carried out through ISO technical committees. Each member body interested in a subject for which a technical committee has been established has the right to be represented on that committee. International organizations, governmental and non-governmental, in liaison with ISO, also take part in the work. ISO collaborates closely with the International Electrotechnical Commission (IEC) on all matters of electrotechnical standardization.

The procedures used to develop this document and those intended for its further maintenance are described in the ISO/IEC Directives, Part 1. In particular, the different approval criteria needed for the different types of ISO documents should be noted. This document was drafted in accordance with the editorial rules of the ISO/IEC Directives, Part 2 (see [www.iso.org/directives](http://www.iso.org/directives)).

Attention is drawn to the possibility that some of the elements of this document may be the subject of patent rights. ISO shall not be held responsible for identifying any or all such patent rights. Details of any patent rights identified during the development of the document will be in the Introduction and/or on the ISO list of patent declarations received (see [www.iso.org/patents](http://www.iso.org/patents)).

Any trade name used in this document is information given for the convenience of users and does not constitute an endorsement.

For an explanation of the voluntary nature of standards, the meaning of ISO specific terms and expressions related to conformity assessment, as well as information about ISO's adherence to the World Trade Organization (WTO) principles in the Technical Barriers to Trade (TBT) see [www.iso.org/iso/foreword.html](http://www.iso.org/iso/foreword.html).

This document was prepared by Technical Committee ISO/TC 211, *Geographic information/Geomatics*, in close collaboration with [the Open Geospatial Consortium \(OGC\)](http://www.opengeospatial.org).

This third edition cancels and replaces the second edition (ISO 19111:2007), which has been technically revised. This document also incorporates the provisions of ISO 19111-2:2009, which is cancelled.

The changes in this edition compared to the previous edition are:

- inclusion of applicable modern geodetic terminology;
- extension to describe dynamic geodetic reference frames;
- extension to describe geoid-based vertical coordinate reference systems;
- extension to allow triaxial ellipsoid for planetary applications;
- extension to describe three-dimensional projected coordinate reference systems;
- addition of 'datum ensembles' to allow grouping of related realizations of a reference frame where for lower accuracy applications the differences are insignificant;
- clarification in the modelling of derived coordinate reference systems;
- remodelling of the metadata elements scope and extent;
- addition of requirements to describe coordinate metadata and the relationship between spatial coordinates;
- additional modelling of temporal coordinate reference system components sufficient for spatio-temporal coordinate referencing;
- consolidation of the provisions of ISO 19111-2:2009 (*Spatial referencing by coordinates — Extension for parametric values*) into this document;

- change in name from 'Spatial referencing by coordinates' to 'Referencing by coordinates', due to the inclusion of the non-spatial coordinate reference system subtypes of parametric (from ISO 19111-2) and temporal;
- the correction of minor errors.

Further details are given in [Annex G](#).

In accordance with the ISO/IEC Directives, Part 2, 2018, *Rules for the structure and drafting of International Standards*, in International Standards the decimal sign is a comma on the line. However the General Conference on Weights and Measures (*Conférence Générale des Poids et Mesures*) at its meeting in 2003 passed unanimously the following resolution:

“The decimal marker shall be either a point on the line or a comma on the line.”

In practice, the choice between these alternatives depends on customary use in the language concerned. In the technical areas of geodesy and geographic information it is customary for the decimal point always to be used, for all languages. That practice is used throughout this document.

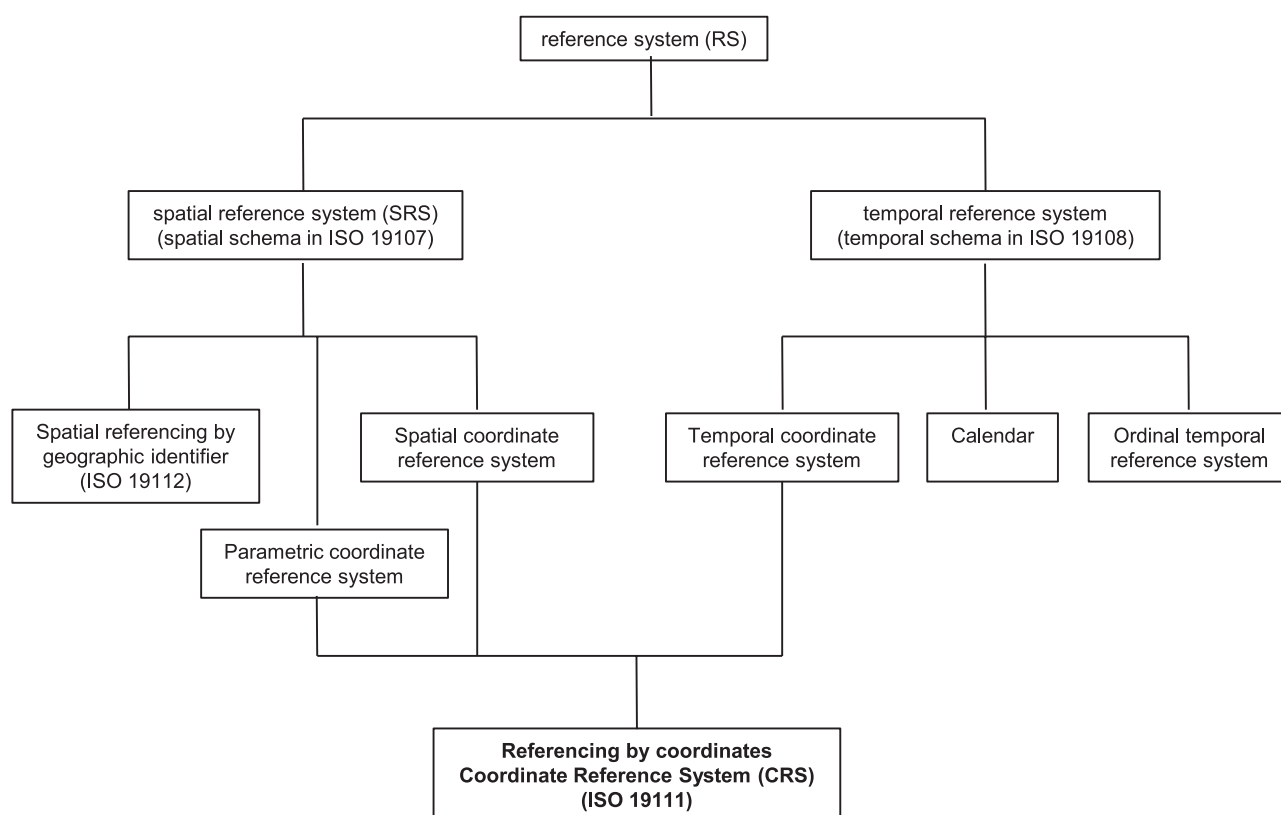
Any feedback or questions on this document should be directed to the user's national standards body. A complete listing of these bodies can be found at [www.iso.org/members.html](http://www.iso.org/members.html).

## Introduction

Geographic information is inherently four-dimensional and includes time. The spatial component relates the features represented in geographic data to positions in the real world. Spatial references fall into two categories:

- those using coordinates;
- those based on geographic identifiers.

Spatial referencing by geographic identifiers is defined in ISO 19112[5]. This document describes the data elements, relationships and associated metadata required for spatial referencing by coordinates, expanded from a strictly spatial context to include time. The temporal element is restricted to temporal coordinate systems having a continuous axis. The temporal element excludes calendars and ordinal reference systems due to their complexities in definition and in transformation. The context is shown in [Figure 1](#).



**Figure 1 — Context of referencing by coordinates**

Certain scientific communities use three-dimensional systems where horizontal position is combined with a non-spatial parameter. In these communities, the parameter is considered to be a third, vertical, axis. The parameter, although varying monotonically with height or depth, does not necessarily vary in a simple manner. Thus conversion from the parameter to height or depth is non-trivial. The parameters concerned are normally absolute measurements and the datum is taken with reference to a direct physical measurement of the parameter. These non-spatial parameters and parametric coordinate reference system modelling constructs were previously described in ISO 19111-2:2009 but have been incorporated into this revision because the modelling constructs are identical to the other coordinate reference system types included in this document.

This document describes the elements that are necessary to fully define various types of coordinate reference systems applicable to geographic information. The subset of elements required is partially dependent upon the type of coordinates. This document also includes optional fields to allow for the

inclusion of metadata about the coordinate reference systems. The elements are intended to be both machine and human readable.

In addition to describing a coordinate reference system, this document provides for the description of a coordinate operation between two different coordinate reference systems or a coordinate operation to account for crustal motion over time. With such information, spatial data referenced to different coordinate reference systems can be referenced to one specified coordinate reference system at one specified time. This facilitates spatial data integration. Alternatively, an audit trail of coordinate manipulations can be maintained.

# Australian/New Zealand Standard

## Geographic information — Referencing by coordinates

### 1 Scope

This document defines the conceptual schema for the description of referencing by coordinates. It describes the minimum data required to define coordinate reference systems. This document supports the definition of:

- spatial coordinate reference systems where coordinate values do not change with time. The system may:
  - be geodetic and apply on a national or regional basis, or
  - apply locally such as for a building or construction site, or
  - apply locally to an image or image sensor;
  - be referenced to a moving platform such as a car, a ship, an aircraft or a spacecraft. Such a coordinate reference system can be related to a second coordinate reference system which is referenced to the Earth through a transformation that includes a time element;
- spatial coordinate reference systems in which coordinate values of points on or near the surface of the earth change with time due to tectonic plate motion or other crustal deformation. Such dynamic systems include time evolution, however they remain spatial in nature;
- parametric coordinate reference systems which use a non-spatial parameter that varies monotonically with height or depth;
- temporal coordinate reference systems which use dateTime, temporal count or temporal measure quantities that vary monotonically with time;
- mixed spatial, parametric or temporal coordinate reference systems.

The *definition* of a coordinate reference system does not change with time, although in some cases some of the defining parameters can include a rate of change of the parameter. The coordinate values within a dynamic and in a temporal coordinate reference system can change with time.

This document also describes the conceptual schema for defining the information required to describe operations that change coordinate values.

In addition to the minimum data required for the definition of the coordinate reference system or coordinate operation, the conceptual schema allows additional descriptive information - coordinate reference system metadata - to be provided.

This document is applicable to producers and users of geographic information. Although it is applicable to digital geographic data, the principles described in this document can be extended to many other forms of spatial data such as maps, charts and text documents.

### 2 Normative references

The following documents are referred to in the text in such a way that some or all of their content constitutes requirements of this document. For dated references, only the edition cited applies. For undated references, the latest edition of the referenced document (including any amendments) applies.

ISO 8601, *Data elements and interchange formats — Information interchange — Representation of dates and times*

ISO 19103, *Geographic information — Conceptual schema language*

ISO 19115-1:2014, *Geographic information — Metadata — Part 1: Fundamentals*