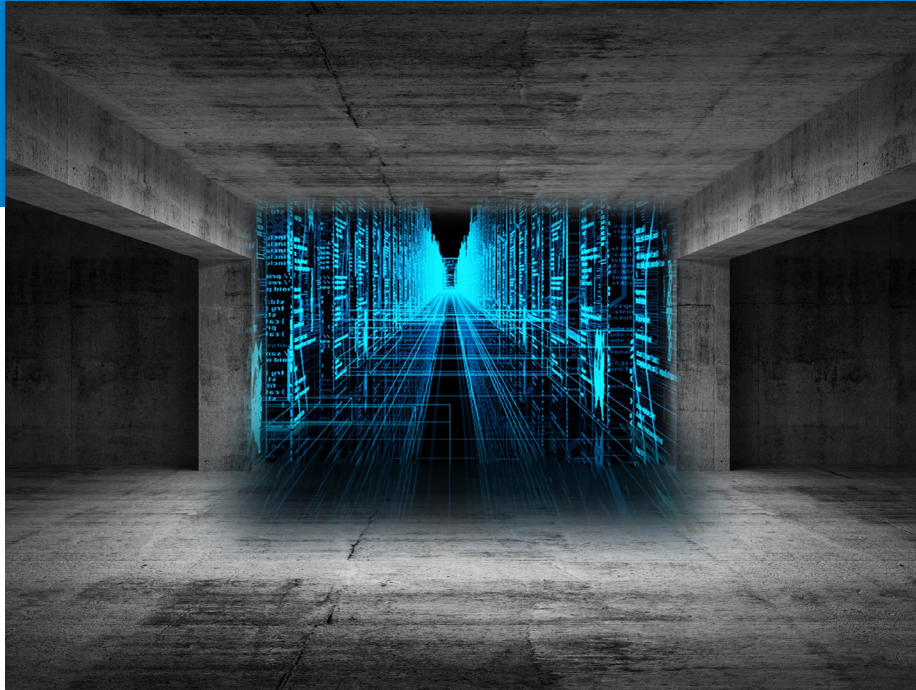


An ACI Technical Publication

SYMPOSIUM VOLUME



The Concrete Industry in the Era
of Artificial Intelligence

SP-350

Editors:
M.Z. Naser and Kevin Mueller



American Concrete Institute
Always advancing

The Concrete Industry in the Era of Artificial Intelligence

Sponsored by
ACI Committees 216, 444, and 544

ACI Virtual Concrete Convention
March 29-April 2, 2020

Editors:
M.Z. Naser and
Kevin Mueller



American Concrete Institute
Always advancing

SP-350

First printing, November 2021

Discussion is welcomed for all materials published in this issue and will appear ten months from this journal's date if the discussion is received within four months of the paper's print publication. Discussion of material received after specified dates will be considered individually for publication or private response. ACI Standards published in ACI Journals for public comment have discussion due dates printed with the Standard.

The Institute is not responsible for the statements or opinions expressed in its publications. Institute publications are not able to, nor intended to, supplant individual training, responsibility, or judgment of the user, or the supplier, of the information presented.

The papers in this volume have been reviewed under Institute publication procedures by individuals expert in the subject areas of the papers.

Copyright © 2021
AMERICAN CONCRETE INSTITUTE
38800 Country Club Dr.
Farmington Hills, Michigan 48331

All rights reserved, including rights of reproduction and use in any form or by any means, including the making of copies by any photo process, or by any electronic or mechanical device, printed or written or oral, or recording for sound or visual reproduction or for use in any knowledge or retrieval system or device, unless permission in writing is obtained from the copyright proprietors.

Printed in the United States of America

Editorial production: Susan K. Esper

ISBN-13: 978-1-64195-162-3

PREFACE

The Concrete Industry in the Era of Artificial Intelligence

This special publication draws inspiration from the Technical Session entitled “The Concrete Industry in the Era of Artificial Intelligence,” held during the ACI Virtual Concrete Convention in spring 2020. To parallel the Technical Session, this special publication is also tailored to showcase the unprecedented potential of leveraging artificial intelligence (AI) methods—including its derivatives of machine learning (ML) and deep learning (DL)—in the concrete industry as a whole.

The idea behind this effort started as a thought during an ACI Committee 216 meeting. From there, both ACI Committees 444 (Chair: Thomas Schumacher) and 554 (Chair: Liberato Ferrara) displayed interest in co-sponsoring this special publication. This special publication comprises fifteen papers (five from our panelists and ten received from authors representing academia and the concrete industry). This collection of papers covers the use of various AI techniques at the material level (i.e., concrete performance and mass-scale testing, property predictions, and optimization, etc.), elemental level (e.g., behavioral and capacity prediction of slabs, walls, beams, and anchorages, etc.), as well as system level (viz. damage and crack detection of concrete bridges and concrete composite structures).

We are very thankful to ACI, the ACI Technical Activities Committee, as well as all three technical committees. Your kind support and commitment have not only allowed us to explore a new realm of possibilities but have also enabled us to set the stage towards a new and modern future to our industry. Special thanks go to our panelists and contributors who were very kind to share their most recent research and unique ideas pertaining to infusing AI solutions to various problems within our domain. In addition, we send our warm regards to our reviewers, ACI staff, and Ms. Barbara A. Coleman for her help in setting up and editing this effort.

TABLE OF CONTENTS

SP-350-1:

Damage Detection in Concrete Bridge T girders using 3D Finite Element Simulations
Trained by Artificial Neural Network 1-15
Authors: AlaaEldin Abouelleil, Hayder A. Rasheed, and Eric Fletcher

SP-350-2:

Machine Learning Driven Drift Capacity Model for Reinforced Concrete Walls 16-26
Authors: Muneera Aladsani, Henry Burton, Saman Abdullah, and John Wallace

SP-350-3:

State of the Art on Self-Healing Capacity of Cementitious Materials Based on Data
Mining Strategies 27-44
Authors: Shashank Gupta, Salam Al-Obaidi, and Liberato Ferraral

SP-350-4:

Development of Fault-Detection ANNs for Structural Damage Prediction 45-53
Authors: Mohammad H. AlHamaydeh, Ahmed F. Mohamed, and Mahmoud I. Awad

SP-350-5:

Review of Artificial Neural Networks and A New Feed-Forward Network for Anchorage
Analysis in Cracked Concrete 54-68
Authors: Salvio A. Almeida Jr. and Serhan Guner

SP-350-6:

Deep Neural Network to Predict Fire Resistance of FRP-Strengthened Beams 69-80
Authors: Bhatt, P.P. and Sharma, N.

SP-350-7:

Artificial Neural Network to Predict Bond Strength of Deformed Bars in Concrete 81-89
Authors: Vitaliy V. Degtyarev

SP-350-8:

Predicting the Compressive Strength Based in NDT Using Deep Learning 90-102
Authors: José A. Guzmán-Torres, Francisco J. Domínguez-Mota, Gerardo Tinoco-Guerrero,
Elia M. Alonso-Guzmán, and Wilfrido Martínez-Molina

SP-350-9:

An Intelligently Designed AI for Structural Health Monitoring of a Reinforced
Concrete Bridge 103-112
Authors: William R. Locke, Stefani C. Mokalled, Omar R. Abuodeh, Laura M. Redmond,
and Christopher S. McMahan

SP-350-10:

Response Prediction of Ultra-High-Performance Concrete Beams using Machine Learning 113-122
Authors: Roya Solhmirzaei, Hadi Salehi, and Venkatesh Kodur

SP-350-11:

Regression-Based Surrogate Models for the Probabilistic Study of Fire Exposed Composite
Structures Considering Tensile Membrane Action 123-131
Authors: Ranjit Kumar Chaudhary, Ruben Van Coile, and Thomas Gernay

SP-350-12:

Prediction of Shear Strength of One-Way Slabs Voided by Circular Paper Tubes using Artificial Intelligence..... 132-141
Author: Iman Mansouri, Chang-Hwan Lee, and Paul O. Awoyera

SP-350-13:

The Use of Machine Learning Algorithms and IoT Sensor Data for Concrete Performance Testing and Analysis 142-152
Authors: Andrew Fahim, Tahmid Mehdi, Ali Taheri, Pouria Ghods, Aali Alizadeh, and Sarah De Carufel

SP-350-14:

Artificial Intelligence for Real-Time Crack Detection of Ultra-High-Performance Concrete.....153-166
Authors: Jung Wang, Chao Liu, and Yail J. Kim

SP-350-15:

Artificial Neural Network Utilization for Nondestructive Testing and Evaluation of Concrete Structures167-177
Authors: Wael A. Zatar, M. Ammar Alzarrad, Tu T. Nguyen, and Hai D. Nguyen

Damage Detection in Concrete Bridge T girders using 3D Finite Element Simulations Trained by Artificial Neural Network

AlaaEldin Abouelleil, Hayder A. Rasheed, and Eric Fletcher

Synopsis: The structural deterioration of aging infrastructure systems is becoming an increasingly important issue worldwide. To compound the problem, economic strains limit the resources available for repair or replacement of such systems. Over the past several decades, structural health monitoring (SHM) has proven to be a cost-effective method for the detection and evaluation of damage in structures. Visual inspection and condition rating is one of the most commonly applied SHM techniques, but the effectiveness of SHM varies depending on the availability and experience of qualified personnel and largely qualitative damage evaluations. Simply supported three-dimensional reinforced concrete T-beams with varying geometric, material, and cracking properties were modeled using Abaqus finite element (FE) analysis software. Up to five cracks were considered in each beam, and the ratios of stiffness between cracked and healthy beams with the same geometric and material parameters were measured at nine equidistant nodes along the beam. A feedforward ANN utilizing backpropagation learning algorithms was then trained on the FE model database with beam properties and nodal stiffness ratios serving as inputs for the neural network model. The outputs consisted of the predicted parameters of location, depth and width of up to five cracks. This inverse problem is very difficult or impossible to solve with the training done by the Artificial Neural Network. One ANN was trained to predict the parameters of the cracks using the full database of FE simulations. The damage prediction ANN achieved fair prediction accuracies, with coefficients of determination (R^2) equal to 0.42. This result was the outcome of the no uniqueness in the prediction of this inverse analysis. Nevertheless, this ANN model provides a rough estimate of the cracking type and damage content in bridge girders once the nodal stiffness ratios are measured by applying a field vehicle loading and measuring the deflection using a theodolite. A touch-enabled user interface was developed to allow the ANN model to predict the crack configurations. The application was given the acronym DRY BEAM, for Damage Recognition Yielding Bridge Evaluation After Monitoring.

Keywords: artificial neural network, finite element, damage detection, girders