



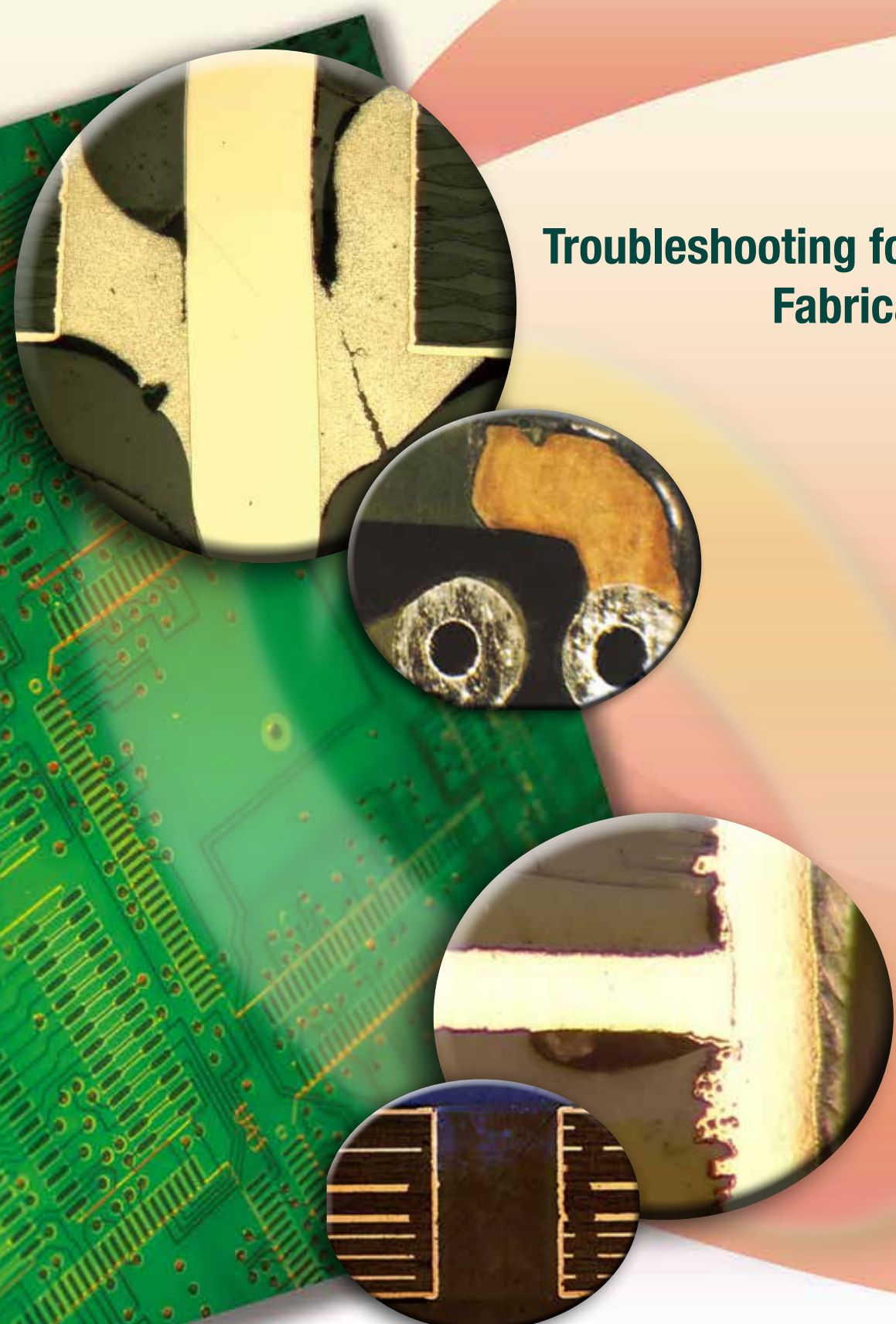
BUILD ELECTRONICS BETTER

IPC-9121A

Troubleshooting for Printed Board Fabrication Processes

Supersedes IPC-9121
February 2016

February 2022



The Principles of Standardization

In May 1995 the IPC's Technical Activities Executive Committee (TAEC) adopted Principles of Standardization as a guiding principle of IPC's standardization efforts.

Standards Should:

- Show relationship to Design for Manufacturability (DFM) and Design for the Environment (DFE)
- Minimize time to market
- Contain simple (simplified) language
- Just include spec information
- Focus on end product performance
- Include a feedback system on use and problems for future improvement

Standards Should Not:

- Inhibit innovation
- Increase time-to-market
- Keep people out
- Increase cycle time
- Tell you how to make something
- Contain anything that cannot be defended with data

Notice

IPC Standards and Publications are designed to serve the public interest through eliminating misunderstandings between manufacturers and purchasers, facilitating interchangeability and improvement of products, and assisting the purchaser in selecting and obtaining with minimum delay the proper product for his particular need. Existence of such Standards and Publications shall not in any respect preclude any member or nonmember of IPC from manufacturing or selling products not conforming to such Standards and Publication, nor shall the existence of such Standards and Publications preclude their voluntary use by those other than IPC members, whether the standard is to be used either domestically or internationally.

Recommended Standards and Publications are adopted by IPC without regard to whether their adoption may involve patents on articles, materials, or processes. By such action, IPC does not assume any liability to any patent owner, nor do they assume any obligation whatever to parties adopting the Recommended Standard or Publication. Users are also wholly responsible for protecting themselves against all claims of liabilities for patent infringement.

IPC Position Statement on Specification Revision Change

It is the position of IPC's Technical Activities Executive Committee that the use and implementation of IPC publications is voluntary and is part of a relationship entered into by customer and supplier. When an IPC publication is updated and a new revision is published, it is the opinion of the TAEC that the use of the new revision as part of an existing relationship is not automatic unless required by the contract. The TAEC recommends the use of the latest revision. Adopted October 6, 1998

Why is there a charge for this document?

Your purchase of this document contributes to the ongoing development of new and updated industry standards and publications. Standards allow manufacturers, customers, and suppliers to understand one another better. Standards allow manufacturers greater efficiencies when they can set up their processes to meet industry standards, allowing them to offer their customers lower costs.

IPC spends hundreds of thousands of dollars annually to support IPC's volunteers in the standards and publications development process. There are many rounds of drafts sent out for review and the committees spend hundreds of hours in review and development. IPC's staff attends and participates in committee activities, typesets and circulates document drafts, and follows all necessary procedures to qualify for ANSI approval.

IPC's membership dues have been kept low to allow as many companies as possible to participate. Therefore, the standards and publications revenue is necessary to complement dues revenue. The price schedule offers a 50% discount to IPC members. If your company buys IPC standards and publications, why not take advantage of this and the many other benefits of IPC membership as well? For more information on membership in IPC, please visit www.ipc.org or call 847/597-2872.

Thank you for your continued support.



IPC-9121A

Troubleshooting for Printed Board Fabrication Processes

Developed by the Printed Board Process Effects Handbook
Task Group (7-24a) of the Process Control Management
Committee (7-20) of IPC

Supersedes:

IPC-9121, Amendment 2 -

September 2019

IPC-9121, Amendment 1 -

April 2018

IPC-9121 -

October 2016

IPC-PE-740A -

December 1997

PCB Sections of IPC-PE-740A -

December 1997

Users of this publication are encouraged to participate in the
development of future revisions.

Contact:

IPC

3000 Lakeside Drive, Suite 105 N

Bannockburn, Illinois

60015-1249

Tel 847 615.7100

Fax 847 615.7105

This Page Intentionally Left Blank

Acknowledgment

Any document involving a complex technology draws material from a vast number of sources across many continents. While the principal members of the Printed Board Process Effects Handbook Task Group (7-24a) of the Process Control Management Committee (7-20) are shown below, it is not possible to include all of those who assisted in the evolution of this standard. To each of them, the members of the IPC extend their gratitude

7-20 Process Control Management Committee

Chair
Michael V Carano
RBP Chemical Technology, Inc.

7-24a Printed Board Process Effects Handbook Task Group

Chair
Michael V. Carano
RBP Chemical Technology, Inc.

Co-Chair
Paul Cooke
AGC Nelco America

Technical Liaison of the IPC Board of Directors

Bob Neves
Microtek (Changzhou) Laboratories

7-24a Printed Board Process Effects Handbook Task Group

Gerald Bogert
Bechtel Plant Machinery, Inc.

Michael Carano
RBP Chemical Technology, Inc.

Zhiman Chen
Zhuzhou CRRC Times
Electric Co., Ltd.

Michael Collier
Teledyne Advanced Electronic
Solutions

Paul Cooke
AGC Nelco America

Sarah Czaplewski-Campbell
IBM Corporation

Francesco Di Maio
GESTLABS S.r.l.

Paige Fiet
Michigan Technological University

Tom Fitzgerald
TTM Technologies

Dennis Fritz
MacDermid Enthone
Electronics Solutions

Daniel Heitner
Summit Interconnect - Orange

Joe Hughes
Hughes Circuits, Inc.

Kevin Kusiak
Lockheed Martin Corporation

Dan Loew
L3Harris

Jennifer Ly
BAE Systems

Jefferson Mao
Schweizer Electronic
(Jiangsu) Co., Ltd.

Brianna McCarthy
Summit Interconnect - Orange

Isaac Mendez
Teradyne

Jan Pedersen
Elmatica AS

Robert Roessler
ABB Power Electronics Inc.

David Sommervold
Henkel US Operations Corp.

Bhanu Sood
NASA Goddard Space Flight Center

Toshiyasu Takei
Japan Unix Co., Ltd.

Jesse Vaughan
ACDI - American Computer
Development, Inc.

Jack Zhu
Veoneer China CO.,LTD

Special Recognition

IPC recognizes the following group of people who showed exceptional leadership and effort in the development of IPC-9121A. Their efforts accelerated the process of publishing this much needed standard.

Michael Carano
RBP Chemical Technology, Inc.

Paul Cooke
AGC Nelco America

Sarah Czaplewski-Campbell
IBM Corporation

Tom Fitzgerald
TTM Technologies

Daniel Heitner
Summit Interconnect - Orange

Kevin Kusiak
Lockheed Martin Corporation

Brianna McCarthy
Summit Interconnect - Orange

Robert Roessler
ABB Power Electronics Inc.

Bhanu Sood
NASA Goddard Space Flight Center

This Page Intentionally Left Blank

Table of Contents

1	SCOPE	1-1	4.3.1	Over-Sized Exposed Features Across Entire Copy	4-5
1.1	Purpose	1-1	4.3.2	Over-Sized Exposed Features on Center of Copy	4-5
1.2	Classification	1-1	4.3.3	Poor Edge Sharpness (Blurred Images).....	4-5
1.3	Use of “Lead”	1-1	4.3.4	Image Gain: Background Discoloration in Clear Area – Uniform High Background (Clear Area) Density	4-6
1.4	Abbreviations and Acronyms	1-1	4.3.5	Low D_{MAX} (Inadequate Image Density) All the Time	4-6
1.5	Terms and Definitions	1-1	4.3.6	Low D_{MAX} Some of the Time	4-6
1.6	IPC-9121 Format Example	1-1	4.3.7	Pinholes or Voids in Image	4-7
1.7	Guidelines for Effective Troubleshooting and Process Control	1-2	4.3.8	Specks in Clear Area of Film	4-7
1.8	Parameter Analysis	1-3	4.3.9	Image Distortion	4-7
1.8.1	Brainstorming	1-3	4.3.10	Straight Lines (Not Part of CAD Data) Showing on Processed Film	4-7
1.8.2	Process Audit	1-3	4.3.11	Random Yellow Spots in Image Area	4-7
1.8.3	Initial Capability Study	1-3	4.3.12	Ammonia Processor Not Developing Properly, Even with Correct Heating/Temperature	4-7
1.8.4	Optimization	1-3	4.3.13	Film Sticking in Processor	4-8
1.8.5	Confirmation and Final Capability Assessment	1-4	4.4	Ag Halide Film (Master and Working Phototools, Laser Raster Plotted)	4-8
1.8.6	Parameter Control	1-4	4.4.1	Black Lines Too Wide (Clear Lines Too Narrow)	4-8
1.8.7	Corrective Action Plan	1-4	4.4.2	Clear Lines Too Wide (Black Lines Too Narrow)	4-8
2	APPLICABLE DOCUMENTS	2-1	4.4.3	Low image density (D_{MAX} too low)	4-9
2.1	IPC	2-1	4.4.4	Clear Areas Not Clear Enough (D_{MIN} Too High)	4-9
3	DESIGN AND DOCUMENTATION	3-1	4.4.5	Milky White Color in Clear Area	4-9
3.1	Design	3-1	4.4.6	Pinholes	4-9
3.2	Layout Problems	3-2	4.4.7	Poor Line Edge Quality	4-9
3.2.1	Location of Holes and Terminations	3-2	4.4.8	Black Speck Redeposit in Clear Area – Irregular Shape	4-9
3.2.2	Electrical Description Inconsistency	3-4	4.4.9	Ag Pepper Spots in Clear Area – Round Shape	4-10
3.2.3	Tooling Hole Location	3-5	4.4.10	Yellow, Orange/Yellow or Brown Deposits in Clear Areas of Film	4-10
3.3	Electrical	3-5	4.4.11	Powder Deposits on Film (Yellow or White)	4-10
3.3.1	Electrical Arcing Between Adjacent Conductors	3-5	4.4.12	Black line abrasion	4-10
3.3.2	Unable to Achieve Functionality/ Reliability Using Signal Integrity Devices	3-6	4.4.13	Streaking	4-10
3.3.3	Conductor Crosstalk and Board Radiation	3-6	4.4.14	Image Not Sharp	4-10
4	ARTWORK AND IMAGING	4-1	4.4.15	Lines Not Straight	4-10
4.1	Phototools	4-1			
4.2	General Process Effects (Common with Ag and Diazo Phototools)	4-4			
4.2.1	Feature Size Dimensions Too Large (Larger than CAD Data)	4-4			
4.2.2	Feature Size Dimensions Too Small (Smaller Than CAD Data)	4-4			
4.3	Diazo Phototools	4-5			

4.4.16	Pinholes in Phototool	4-11	6.1.3	Metal Foils	6-1
4.4.17	CAD Database Incompatible	4-11	6.1.4	Prepreg/B-stage	6-2
4.4.18	Long or Slow CAD Database Conversion	4-11	6.1.5	Laminate	6-2
4.4.19	Phototool Not Producing Clear Image	4-11	6.2	Problems Associated with Base Materials	6-2
4.5	Ag Halide Films – Protective Coatings	4-11	6.2.1	Material Identification	6-2
4.5.1	Finished, Laminated (Protective Coating) Artwork Film Curved or Bent	4-11	6.2.2	Dimensional Stability	6-3
4.5.2	Protective Coating Film Wrinkled or Shrunken	4-11	6.2.3	Mechanical Stability	6-3
4.6	Glass – Ag Halide	4-12	6.2.4	Foreign Material/Inclusions	6-4
4.6.1	Line Width Incorrect (Over-Sized or Under-Sized)	4-12	6.2.5	Metal Surface Defects	6-6
4.6.2	Low Image Density	4-12	6.2.6	Chemical and Thermal Resistance	6-8
4.6.3	Pinholes	4-12	6.2.7	Electrical	6-10
4.6.4	Poor-Quality Line Edge	4-13	7	MECHANICAL OPERATIONS	7-1
4.6.5	Uneven Density, Mottle or Streaks	4-13	7.1	Drilling	7-1
4.6.6	Specks or Deposits on Processed Glass Plate	4-13	7.1.1	Dimensional	7-2
4.7	Glass – Hard-Surface Image on Glass	4-13	7.1.2	Hole Quality	7-3
4.7.1	Ragged Lines	4-13	7.1.3	Processing	7-11
4.7.2	Pinholes or Voids	4-14	7.2	Punching (Pierce and Blank) (Dimensional)	7-12
4.8	LDI and Other Digital Imaging Technologies	4-14	7.2.1	Undersized holes/features	7-12
4.8.1	Resist Image Has Irregular (Distorted) Areas	4-14	7.2.2	Improperly Located Hole or Feature	7-12
4.8.2	Evidence of Skipped Image Pixels, Rows	4-14	7.2.3	External Dimensions Out of Spec	7-13
4.8.3	Problems with Front-to-Back Image Registration on Top and Bottom of Board	4-15	7.2.4	Missing Holes or Features	7-13
4.8.4	Incomplete Polymerization of Resist in Exposed Areas	4-15	7.2.5	Edge Delamination	7-13
4.8.5	Resist Image Has Pinholes/Voids	4-15	7.2.6	Fibers and/or Roughness Along Edges	7-13
4.8.6	Image Lines Have Scalloped (Step-Pattern) Appearance (Especially on Angled Lines)	4-15	7.2.7	Surface Dents and Scratches	7-14
4.8.7	Blurred image	4-15	7.3	Routing	7-14
5	HANDLING AND STORAGE	5-1	7.3.1	Feature out of tolerance	7-14
5.1	Fractured Corner/Edge	5-1	7.3.2	Crazing	7-14
5.2	Dent in Cu Foil	5-2	7.3.3	Rough Edges of Punched Holes	7-15
5.3	Fracturing of Thin Material or Delicate Designs	5-3	7.3.4	Cusp Forms on Edge Where Pin-Less Routing Pressure Foot Clamps	7-15
5.4	Blow Holes in Lamination Stack Due to Entrapped Moisture	5-3	7.3.5	Caking Dust	7-16
6	BASE MATERIALS	6-1	7.3.6	Router bit discoloration	7-16
6.1	General	6-1	7.3.7	Breaking Bits	7-16
6.1.1	Resins	6-1	7.4	Shearing	7-16
6.1.2	Reinforcements	6-1	7.4.1	Panel Not Square	7-16
			7.4.2	Panel Lift	7-17
			7.5	Beveling	7-17
			7.5.1	Cu Foil Lifting	7-17
			7.5.2	Rough Bevel	7-17
			7.5.3	Uneven bevel	7-17
			7.5.4	Processing	7-18
			7.6	Scoring	7-18
			7.6.1	Score Lines Misplaced	7-18

7.6.2	Improper Setup	7-19	8.5	Hole Metallization (Cu Deposition) (Includes Electroless Cu Bath and Rinses)	8-22
7.6.3	Score Depth Fluctuates from Line to Line	7-19	8.5.1	Bath Control	8-23
7.6.4	Web Thickness Varies Across One Line	7-19	8.5.2	Hole Conditions	8-26
7.6.5	Improper Score Angle	7-19	8.5.3	Surface Problems	8-30
7.6.6	Cutter Wheels Marked Panel Surface	7-19	8.6	Hole Metallization (Rework)	8-31
7.7	Laser Drilling	7-19	8.6.1	Poor Interconnect Conductivity During Final Testing	8-31
7.7.1	Hole Not Properly Located	7-19	8.7	Direct Metallization Processes	8-32
7.7.2	Improper Hole Size	7-20	8.7.1	Pd-Based Direct Metallization Processes	8-32
7.7.3	Holes Not Drilled	7-20	8.7.2	Carbon Black and Graphite Dispersion Processes	8-33
7.7.4	Holes Not Drilled Through	7-20	8.8	Conductive Polymers	8-36
7.7.5	Blind Via or Microvias Drilled Through	7-20	8.9	Full-Build Electroless Cu	8-36
7.7.6	Burrs	7-20	8.9.1	Additive Processing	8-36
7.7.7	Capture Pad Penetration	7-21	8.9.2	Semi-Additive Processing	8-37
7.7.8	Delamination of Target Pad	7-21	8.10	Electroplating	8-39
7.7.9	Insufficient Contact Area (As-Received Samples)	7-22	8.10.1	Electrolytic Cu Peels from Base Metal	8-39
7.7.10	Microvias Separation (Thermal Stressed)	7-22	8.10.2	Partial Plating of Circuit Pattern (Skip Plating / Step Plating)	8-40
7.8	Water-Jet Cutting/Profiling	7-23	8.10.3	Nonuniform Plating Distribution Across Surface of Panel	8-40
7.8.1	Finished Board Dimension Out of Tolerance	7-23	8.10.4	Voids in Holes (Not Seen After Electroless Cu)	8-41
7.8.2	Incomplete Cut Through Substrate	7-23	8.10.5	Nodular Cu Plating	8-42
7.8.3	Haloing, Cracking, Delamination or Rough Edges	7-23	8.10.6	Plating Fold in PTH	8-43
7.8.4	Excessive Nozzle Wear	7-23	8.10.7	Barrel Plating Issues Due to Insufficient Resistance to Thermal Stresses	8-44
8	HOLE PREPARATION AND METALLIZATION	8-1	8.10.8	Electroplated Cu, Corner or “Knee” Issues	8-45
8.1	Desmear	8-1	8.10.9	Burrs or Nodules in PTH	8-46
8.1.1	Chemical Desmear Using Alkaline Permanganate	8-1	8.10.10	Incomplete Microvia Cu Fill	8-47
8.1.2	Plasma Desmear	8-2	8.10.11	Failure to Meet Cu Mechanical Requirements	8-47
8.2	Electroless Processes	8-13	8.10.12	Columnar Cu Grain Structure	8-48
8.2.1	Electroless Void	8-13	8.10.13	Nodules or Bumps in Critical Contact Area	8-49
8.2.2	Voiding in the Via / Lack of Cu Plating Coverage	8-14	8.10.14	Excessive Foam in Plating Solution	8-50
8.2.3	Voids in Glass and Resin	8-15	8.10.15	Pits in Plated Metal	8-50
8.3	Hole Metallization (Conditioning)	8-16	8.11	Via Fill	8-51
8.3.1	Hole Wall Pullaway	8-16	8.11.1	Material and Properties for Nonconductive Plugging Paste	8-52
8.3.2	Bath Control (Includes Cleaner/Conditioner, Microetch Solutions and Rinses)	8-17	8.11.2	The Relationship Between Coefficient of Thermal Expansion (CTE) and Glass Transition Temperature (T _g)	8-53
8.3.3	Hole Conditions	8-18	9	SURFACE PREPARATION (CLEANING STRUCTURING)	9-1
8.3.4	Surface Conditions	8-19	9.1	Mechanical Cleaning Surface Preparation	9-1
8.4	Hole Catalyzation (Sensitizing) (Includes Predip, Catalyst, and Accelerator Baths and Rinses)	8-20			
8.4.1	Bath Control	8-20			
8.4.2	Hole Conditions	8-21			

9.1.1	General	9-2	10.4.1	Drilling	10-24
9.1.2	Drilling and Deburring	9-5	10.4.2	Plating	10-24
9.1.3	Scrubbing Electroless Cu Surface Before Pattern or Panel Plating	9-5	10.4.3	Etching	10-24
9.1.4	Denoduling Panel-Plated Electroplated Cu Before Tent and Etch	9-6	10.5	Cu Treatment to Improve Laminate Adhesion	10-25
9.1.5	Surface Preparation of Panel-Plated Electroplated Cu Before Tent and Etch (After Denoduling)	9-7	10.5.1	Double-Treated Cu/Laminator's Oxide	10-25
9.1.6	Surface Preparation Before Fusing	9-8	10.5.2	Black or Red/Brown Oxide Coatings	10-25
9.2	Chemical Surface Preparation	9-8	10.5.3	Oxide Bath Control	10-27
9.2.1	General	9-8	10.5.4	Oxide Post-treatment	10-28
9.2.2	Innerlayer Surface Preparation Before Resist Application	9-10	10.5.5	Conveyorized Oxide Systems	10-29
9.2.3	Surface Preparation of Imaged Innerlayers Before Multilayer Bonder Application	9-10	10.5.6	Delamination Relating to Application of Oxide Coating	10-29
9.2.4	Through-Hole Hole Wall Preparation (Desmear) Before Electroless Cu Plating	9-11	10.5.7	Alternative Oxide Coatings (Surface Etch-Organic-Metallic)	10-30
9.2.5	Electroless Cu Surface Preparation Before Pattern or Panel Plating	9-12	11 ETCHING		11-1
9.2.6	Solder Conditioning Before Fusing	9-12	11.1	Equipment-Related Effects and Effects from Other Processes	11-1
9.2.7	Cleaning After Fusing or Hot-Air Solder Leveling (HASL)	9-12	11.1.1	Nonuniform Etch from Side-to-Side of Panel	11-1
9.3	Electrocleaning	9-13	11.1.2	Nonuniform Etch (Cu Left on Some Areas Of Panel While Other Areas are Etched Properly)	11-1
9.3.1	Cu-to-Cu Peelers After Pattern Plating	9-13	11.1.3	Excessive Undercut (Over-Etching Conductor)	11-2
9.3.2	Resist Breakdown, Edge-Lifting, and Under-Plating During Pattern Plating	9-13	11.1.4	Panels Skewing on Conveyor	11-2
9.3.3	Resist Image Stripped in the Electrocleaner	9-13	11.1.5	Cu Left Around Circuit Patterns	11-3
9.3.4	Step Plating	9-14	11.1.6	Etch Rate Slows	11-3
9.4	Section Notes	9-14	11.1.7	Etchant Attacks Resist (Print-and-Etch Work)	11-3
10 INTERCONNECT FORMATION		10-1	11.1.8	Front of Panel Etches Differently From Back of Panel	11-4
10.1	Imaging	10-1	11.2	Cupric Chloride	11-4
10.1.1	Dry-Film Photoresist	10-1	11.2.1	Bath Control	11-4
10.1.2	Liquid Photoresist	10-12	11.2.2	Improper Etching	11-6
10.1.3	Screen-Printed Resist	10-15	11.3	Alkaline (Ammonial) Etchants	11-7
10.1.4	Laser Direct Imaging (LDI) of Photoresist	10-22	11.3.1	Bath Control	11-7
10.1.5	Electrophoretically Deposited Photoresist	10-22	11.3.2	Improper Etching	11-9
10.2	Inner Layer Fabrication	10-23	11.4	Peroxide-Sulfuric Etchants	11-10
10.2.1	Handling	10-23	11.4.1	Bath Control	11-10
10.2.2	Inner Layer Problems	10-23	11.4.2	Improper Etching	11-12
10.3	Print-and-Etch Inner Layers	10-24	11.5	Ferric Chloride	11-13
10.3.1	Cleaning	10-24	11.5.1	Bath Control	11-13
10.3.2	Resist Residue on Inner Layers	10-24	11.5.2	Improper Etching	11-14
10.3.3	Imaging	10-24	11.6	Ammonium or Sodium Persulfate	11-15
10.4	Inner Layers with Blind and/or Buried Vias	10-24	11.6.1	Slow Etch Rate	11-15

12	LAYERING AND LAMINATION	12-1	12.9.2	Surface Imperfections	12-26
12.1	General	12-3	12.10	Lay-Up	12-26
12.1.1	Misregistration	12-3	12.10.1	Blisters/Delamination	12-26
12.1.2	Blisters/Delamination and Interlaminar Adhesion	12-4	12.10.2	Bow and Twist (Warped)	12-26
12.1.3	Bow/Twist	12-5	12.10.3	Panel Thickness	12-26
12.1.4	Laminate Voids	12-6	12.10.4	Surface Imperfections	12-27
12.1.5	Resin Starvation	12-7	12.11	Pressing	12-27
12.1.6	Panel/Board Thickness	12-7	12.11.1	Misregistration	12-27
12.1.7	Surface Imperfections	12-8	12.11.2	Blisters/Delamination	12-28
12.1.8	Pits	12-8	12.11.3	Bow and Twist (Warped)	12-29
12.1.9	Measling	12-9	12.11.4	Laminate Voids	12-30
12.2	Handling	12-10	12.11.5	Resin Starvation	12-32
12.2.1	Misregistration	12-10	12.11.6	Panel Thickness	12-33
12.2.2	Blisters/Delamination	12-11	12.12	Bake After Lamination	12-34
12.2.3	Laminate Voids	12-13	12.12.1	Blisters/Delamination	12-34
12.2.4	Surface Imperfections	12-13	12.12.2	Bow and Twist (Warped)	12-34
12.3	Equipment	12-14	12.12.3	Surface Imperfections	12-34
12.3.1	Blisters/Delamination	12-14	12.13	Subsequent Processing	12-35
12.3.2	Laminate Voids	12-14	12.13.1	Voids in PTHs	12-35
12.4	Material	12-15	12.14	Electrical	12-35
12.4.1	Misregistration	12-15	13	FINAL FINISHES	13-1
12.4.2	Blisters/Delamination	12-16	13.1	Immersion Coatings	13-1
12.4.3	Laminate Voids	12-16	13.1.1	Immersion Sn	13-1
12.4.4	Resin Starvation	12-17	13.1.2	Immersion Ag	13-3
12.4.5	Surface Imperfections	12-17	13.2	Electroless Coatings	13-4
12.5	Tooling	12-18	13.2.1	Electroless Ni	13-4
12.5.1	Misregistration	12-18	13.2.2	Electroless Sn	13-11
12.5.2	Surface Imperfections	12-19	13.3	Organic Solderability Preservative (OSP)	13-12
12.6	Multilayer Design	12-19	13.3.1	OSP Coating Has Nonuniform Appearance Over Cu	13-12
12.6.1	Misregistration	12-19	13.3.2	White Precipitate on Printed Boards or in the OSP Process Tank	13-13
12.6.2	Blisters/Delamination	12-20	13.3.3	Poor Solderability with OSP (Dewetting, Incomplete Solder Flow-Up)	13-13
12.6.3	Laminate Voids	12-20	13.4	Metallic Protective Coatings	13-14
12.6.4	Resin Starvation	12-20	13.4.1	Sn/Pb Fusing	13-14
12.7	Innerlayer Preparation	12-21	13.4.2	Infrared Fusing	13-16
12.7.1	Misregistration	12-21	13.4.3	Hot-Oil Reflow	13-16
12.7.2	Blisters/Delamination	12-21	13.4.4	Vapor-Phase Fusing	13-17
12.8	Prepreg (B-Stage) Preparation	12-24	13.5	Solder Leveling	13-17
12.8.1	Blisters/Delamination	12-24	13.5.1	Hot-Air Leveling	13-17
12.8.2	Laminate Voids	12-25	13.5.2	Machine/Material Problems	13-19
12.8.3	Panel Thickness	12-25	13.6	Immersion Coatings	13-20
12.9	Cu Foil Preparation	12-26			
12.9.1	Blisters/Delamination	12-26			

13.6.1	Immersion Sn	13-20	14.2.4	Cu Oxidation	14-22
13.6.2	Immersion Au	13-21	14.3	Temporary Solder Resists	14-23
13.6.3	Immersion Sn/Pb	13-22	14.3.1	Tape	14-23
13.7	Electroless Coatings	13-23	14.4	Nomenclature (Legend) – Nonmetallic Materials	14-24
13.7.1	Electroless Ni	13-23	14.4.1	Screen-Printed	14-24
13.7.2	Electroless Sn	13-25			
13.8	Microvias	13-26	15 FLEXIBLE AND RIGID-FLEX PRINTED BOARDS		15-1
13.8.1	Etch Artifacts Observed after Microsectioning of Microvias	13-26	15.1	Flexible Printed Board Anomalies	15-1
13.8.2	Plating Artifacts in Microvia	13-26	15.1.1	Coverlay Coverage (Surface Preparation)	15-1
13.8.3	Missing Surface Cu Plating	13-27	15.1.2	Coverlay Coverage (Mechanical Preparation)	15-2
13.8.4	Deformation-Induced Voiding in Flex Observed after Microsectioning	13-27	15.1.3	Adhesive Squeeze-Out – Land Area	15-2
13.8.5	Cap Plating Pulled Off	13-28	15.1.4	Adhesive Squeeze-Out – Foil Surface	15-3
13.8.6	Design Issues with Stacked or Staggered Vias Misregistration	13-28	15.1.5	Access Hole Registration	15-3
13.8.7	Cu-Filled Microvia Voids	13-29	15.1.6	Plating Defects	15-4
13.9	Pattern Plating Rim Voids	13-30	15.1.7	Transitional Zone Squeeze-Out	15-5
13.9.1	Rim Void – Example 1	13-30	15.1.8	Solder Wicking/Plating Under Coverlay	15-6
13.9.2	Rim Void – Example 2	13-30	15.1.9	Voids	15-7
13.9.3	Rim Void – Example 3	13-31	15.1.10	Etchback	15-8
13.9.4	Rim Void – Example 4	13-31	15.1.11	Smear Removal	15-9
14 NONMETALLIC COATINGS		14-1	15.1.12	Trimmed Edges	15-10
14.1	Permanent Solder Resist	14-1	15.1.13	Ag Film	15-10
14.1.1	Screen-Printable Solder Resists (Thermal and UV Cure)	14-1	15.2	Rigid-Flex	15-11
14.1.2	Misregistration	14-2	15.2.1	Delamination or Insufficient Squeeze-Out	15-11
14.1.3	Incomplete Cure (Thermal-Cure Inks)	14-3	15.2.2	Incorrect Radius	15-11
14.1.4	Incomplete Cure (UV-Cure Inks)	14-3	15.2.3	Delamination of Stiffener	15-12
14.1.5	Adhesion Failure	14-4	15.2.4	Flex Edge Damage	15-12
14.1.6	Solder Resist on Lands or in Holes	14-4	15.2.5	Open	15-13
14.1.7	Solder Mask Adhesion Failure after Hot-Air Leveling	14-5	15.2.6	Delamination	15-13
14.1.8	Over-Cure of Solder Mask	14-5	15.2.7	Foreign Material	15-14
14.1.9	Insufficient Moisture/Insulation Resistance	14-5	15.2.8	Holes in Flex Area	15-14
14.1.10	Skipping	14-6	15.2.9	Holes Too Close to Transition Area	15-15
14.1.11	Boards Sticking to Screen	14-6	15.2.10	Delamination	15-15
14.1.12	Dry-Film Solder Resist	14-7	15.2.11	Cu Nesting and Stacking (Telegraphing)	15-16
14.1.13	Liquid Photoimageable (LPI) Solder Resist	14-14	15.2.12	Insufficient Bend Radius	15-17
14.2	Temporary Protective Coatings	14-20	15.2.13	Wrinkles in Flex Circuit Coverlay	15-17
14.2.1	Inhibitor Coatings	14-20	15.2.14	Wrinkling During Flexing of Material	15-18
14.2.2	Rosin- and Resin-Based Coatings (Prefluxes)	14-21	15.2.15	Too Rigid for Depanelization	15-19
14.2.3	Chromate-Inhibitor Coatings	14-22			
				Tables	
			Table 7-1	Drilling Variables and Effects	7-1
			Table 7-2	Provides a correlation between punching process variables and punching process effects	7-12
			Table 7-3	Scoring Variables and Effects	7-18

Table 8-1	Electroless Cu Process—Problem Sources and Subsequent Effects	8-13	Figure 7-11	Residual Barrel Plating	7-11
Table 8-2	Critical Contaminants for Electroless Cu Working Bath and Their Symptoms	8-22	Figure 7-12	Rough Punched-Hole Edge	7-15
Table 9-1	Surface Preparation Method by Laminate Thickness	9-18	Figure 7-13	Lifted Foil	7-17
Table 12-1	Laminate Process – Problem Sources and Subsequent Effects	12-3	Figure 7-14	Laser Drill through Microvia Target Pad	7-20
Figures					
Figure 1-1	Photo Resist Under-Exposure	1-2	Figure 7-15	Penetrated Capture Pad	7-21
Figure 3-1	Grid Outline	3-2	Figure 7-16	Target Pad Delamination	7-21
Figure 3-2	Grid Outline	3-3	Figure 7-17	Insufficient Contact Area	7-22
Figure 3-3	Fiducials	3-3	Figure 7-18	Microvia Plating Separation	7-22
Figure 3-4	Datum Lines Outside of Board	3-4	Figure 8-1	Drill Smear	8-2
Figure 3-5	Non-matching Layout	3-4	Figure 8-2	Before Smear Removal (Left) and After Desmear (Right)	8-3
Figure 3-6	Tooling Holes	3-5	Figure 8-3	Uneven Smear/Resin Removal	8-3
Figure 3-7	Signal Integrity Test.	3-6	Figure 8-4	Excessive Resin Removal	8-4
Figure 4-1	Raster Scanning vs. Vector Plotting	4-1	Figure 8-5	Recessed Fibers	8-5
Figure 4-2	Negative vs. Positive Working Phototools	4-3	Figure 8-6	Wicking Along Glass Fibers	8-6
Figure 4-3	Dimension Change in Polyester Phototools (Size Change During Drying)	4-3	Figure 8-7	Wedge Void	8-7
Figure 5-1	Edge Fracture.	5-1	Figure 8-8	Excessive Negative Etchback	8-8
Figure 5-2	Dent in Foil	5-2	Figure 8-9	Drill Smear	8-9
Figure 5-3	Thin Material Fracture.	5-3	Figure 8-10	Poor Drill Quality	8-10
Figure 6-1	Cu Embedded in Resin	6-4	Figure 8-11	Glass Gouge	8-10
Figure 6-2	Etch Pit	6-5	Figure 8-12	Resin Between Microvia and Target Pad	8-11
Figure 6-3	Dark Spots within Laminate or Prepreg Caused by Embedded Fibers	6-6	Figure 8-13	Plating Void on Resin-Rich Area of PTH	8-11
Figure 6-4	Metal Scratch.	6-7	Figure 8-14	Insufficient Cu Plating Coverage on Glass Fibers	8-12
Figure 6-5	Shiny Spot on Cu Laminate.	6-8	Figure 8-15	Electroless Voids	8-13
Figure 6-6	Void in Laminate	6-9	Figure 8-16	PTH Plating Voiding	8-14
Figure 6-7	Cu Foil Crack Near Plated Cu.	6-10	Figure 8-17	Resin Voids	8-15
Figure 7-1	Hole Misregistration	7-2	Figure 8-18	PTH Cu Plating Pull-Away from Hole Wall.	8-16
Figure 7-2	Resin Smear on Exposed Internal Cu Layer in Hole	7-3	Figure 8-19	Excessive Foam.	8-17
Figure 7-3	Fiber Protrusion from Surrounding Resin.	7-4	Figure 8-20	Epoxy Voids	8-18
Figure 7-4	Nailheading	7-5	Figure 8-21	Blistered Cu	8-19
Figure 7-5	Haloing	7-6	Figure 8-22	Fingerprint	8-19
Figure 7-6	Plating Over Rough Hole Wall	7-7	Figure 8-23	Electroless Cu Voids Caused by Ineffective Catalyst Bath	8-21
Figure 7-7	Burrs on Cu Surface	7-8	Figure 8-24	Voids Caused by Improper Acceleration	8-22
Figure 7-8	Debris in Hole	7-9	Figure 8-25	Electroless Cu Deposits.	8-23
Figure 7-9	Curl Chip	7-10	Figure 8-26	PTH Plating Void on/Glass Area	8-26
Figure 7-10	Excess Cu in Back-Drilled hole	7-10	Figure 8-27	Plating Void on Resin Area Only	8-27
			Figure 8-28	Cu Blister / Hole Wall Pull-Away	8-28
			Figure 8-29	Deposits in PTH	8-29

Figure 8-30	Rough Plating on Surface	8-29	Figure 9-10	Comparison of Aluminum Oxide Particles	9-18
Figure 8-31	Rough Deposit	8-31	Figure 10-1	Photo Resist Under-Exposure	10-2
Figure 8-32	Partial Plating	8-40	Figure 10-2	Resist Scum/Residue	10-3
Figure 8-33	PTH Plating Voids Due to Air Bubble Entrapment	8-41	Figure 10-3	Insufficient Resist Bridging	10-4
Figure 8-34	PTH Plating Void Due to Partial Etch-Out of Electroless Cu	8-41	Figure 10-4	Underdeveloped Resist Areas	10-5
Figure 8-35	Nodular Plating with Particulate Matter	8-42	Figure 10-5	Damaged Photoresist Image	10-6
Figure 8-36	Nodules Near Interface of Resist Sidewall and Surface	8-42	Figure 10-6	Resist Breakdown and Lifting	10-7
Figure 8-37	Plating Fold	8-43	Figure 10-7	Skip Plating	10-10
Figure 8-38	Barrel Plating Cracks	8-44	Figure 10-8	Photoresist Residue	10-11
Figure 8-39	Corner Cracks	8-45	Figure 10-9	Damaged Photoresist	10-13
Figure 8-40	Plating Nodules in Contact Area	8-46	Figure 10-10	Shadows	10-15
Figure 8-41	Microvia Not Completely Filled	8-47	Figure 10-11	Bubbles	10-16
Figure 8-42	Columnar Grain Structure	8-48	Figure 10-12	Resist Ink That Ran Through Screen	10-17
Figure 8-43	Nodules	8-49	Figure 10-13	Slow Breakaway	10-17
Figure 8-44	Excess Foam	8-50	Figure 10-14	Pin-Holing	10-18
Figure 8-45	Plating Pits	8-50	Figure 10-15	Plating Resist Bleeding	10-18
Figure 8-46	High-Density Interconnect (HDI) Substrate with Plugged Vias	8-51	Figure 10-16	Voids in Conductor	10-19
Figure 8-47	Over-Metallized Via-in-Pad	8-51	Figure 10-17	Ragged Conductor Lines	10-19
Figure 8-48	Excessive CTE Leading to Plated Cu Lifting From Filled Via	8-52	Figure 10-18	Marred Ink	10-20
Figure 8-49	Cracked Via Plug Caused by an Uncontrolled and Excessively Fast Curing Process	8-53	Figure 10-19	Deposition of Coating Film	10-22
Figure 8-50	Filled Material Depression	8-54	Figure 10-20	Nonuniform Oxide	10-26
Figure 8-51	Insufficient Wrap Plating	8-54	Figure 10-21	Nonuniform Oxide Coating (Left) and Resist Residues on Surface (Right)	10-27
Figure 8-52	Cu Plating Separation	8-55	Figure 10-22	Nonuniform Oxide Coating	10-30
Figure 8-53	Filled Via Voiding	8-55	Figure 11-1	Excessive Undercut	11-2
Figure 9-1	Examples of Brushes	9-2	Figure 11-2	Excess Cu	11-3
Figure 9-2	Hole Void Due to Broken Tent	9-7	Figure 11-3	Attacked Resist	11-3
Figure 9-3	Sample Results of Brush Footprint Test	9-14	Figure 11-4	Over-Etching	11-6
Figure 9-4	Contact Profilometry Scan	9-15	Figure 11-5	Under or Incomplete Etching	11-7
Figure 9-5	Example Optical Profilometry (Surface Data)	9-15	Figure 11-6	Etch Resist Breaking Down, Leading to Opens	11-8
Figure 9-6	Preferred Roughness and Speed Ranges for Brush Types	9-16	Figure 11-7	Over-Etching	11-9
Figure 9-7	Preferred Roughness and Cutting Speed for Brush Types	9-16	Figure 11-8	Under-Etching	11-10
Figure 9-8	Water Break Test	9-17	Figure 11-9	Over-Etching	11-14
Figure 9-9	Pumice Particle Size Distribution Chart	9-17	Figure 12-1	Laminate Evaluation Area Overview	12-1
			Figure 12-3	Breakout	12-4
			Figure 12-4	Example of Bow (Left) and Twist (Right)	12-5
			Figure 12-5	Laminate Voids	12-6
			Figure 12-6	Resin Starvation	12-7
			Figure 12-7	Pits	12-8
			Figure 12-8	Measling	12-9
			Figure 12-9	Misaligned Internal Layers	12-10

Figure 12-10 Severe Misregistration	12-11	Figure 14-4 Air Entrapment	14-7
Figure 12-11 Resin Fracture	12-11	Figure 14-5 Solder Mask Wrinkle	14-8
Figure 12-12 Examples of Delamination	12-12	Figure 14-6 Resist on Land	14-9
Figure 12-13 Line of Laminate Voids	12-13	Figure 14-7 Development Time Too Long	14-10
Figure 12-14 Delamination and Blister	12-14	Figure 14-8 Solder Resist Breakdown	14-11
Figure 12-15 Conductive Anodic Filament (CAF)	12-16	Figure 14-9 White Residue on Solder Resist	14-11
Figure 12-16 Dielectric Thickness Violated	12-17	Figure 14-10 Adhesion Failure	14-13
Figure 12-17 Misregistration of Layers on Different Cores	12-19	Figure 14-11 Exposed Features after Solder Resist	14-14
Figure 12-18 Prepreg Separation	12-22	Figure 14-12 Bubbles in Dried Resist Film	14-16
Figure 12-19 Light Colored Areas Over Innerlayer Oxide Surface	12-24	Figure 14-13 Solder Resist on Holes	14-18
Figure 12-20 Blisters and Delamination	12-25	Figure 14-14 Solder Leveling Adhesion Failure	14-19
Figure 12-21 Blisters	12-29	Figure 14-15 Unsoldered Lands	14-20
Figure 12-22 Incomplete Hole Fill	12-31	Figure 15-1 Poor Coverlay Coverage Caused by Surface Preparation	15-1
Figure 12-23 Weave Exposure	12-32	Figure 15-2 Poor Coverlay Coverage Caused by Poor Mechanical Preparation	15-2
Figure 12-24 Dry Glass Weave	12-32	Figure 15-3 Adhesive Squeeze-Out	15-2
Figure 13-1 Skip Plating	13-1	Figure 15-4 Adhesive Squeeze-Out – Foil Surface	15-3
Figure 13-2 Lack of Plating	13-4	Figure 15-5 Access Hole Misregistration	15-3
Figure 13-3 Rough Plating	13-5	Figure 15-6 Plating Defects on Flex	15-4
Figure 13-4 Stray Plating	13-6	Figure 15-7 Transition Zone Squeeze-Out	15-5
Figure 13-5 Skip Plating	13-7	Figure 15-8 Solder Wicking	15-6
Figure 13-6 Ni Foot	13-8	Figure 15-9 Voids in Flex	15-7
Figure 13-7 Stray Plating	13-8	Figure 15-10 Etchback	15-8
Figure 13-8 Hyper Corrosion	13-9	Figure 15-11 Smear Removal	15-9
Figure 13-9 Au Peeling Away from Ni	13-10	Figure 15-12 Poorly Trimmed Edges	15-10
Figure 13-10 Nonuniform OSP Coating	13-12	Figure 15-13 Ag Film	15-10
Figure 13-11 Excess OSP	13-13	Figure 15-14 Insufficient Squeeze-Out	15-11
Figure 13-12 Incomplete Solder Flow-Up	13-13	Figure 15-15 Incorrect Radius	15-11
Figure 13-13 Etch Artifacts	13-26	Figure 15-16 Stiffener Delamination	15-12
Figure 13-14 Plating Artifacts	13-26	Figure 15-17 Flex Edge Damage	15-12
Figure 13-15 Missing Surface Cu Plating	13-27	Figure 15-18 Flex Open	15-13
Figure 13-16 Flex Deformation	13-27	Figure 15-19 Delamination Due to Fabrication	15-13
Figure 13-17 Cap Plating Pulled Off	13-28	Figure 15-20 Instances of Foreign Material	15-14
Figure 13-18 Staggered Via Failure	13-28	Figure 15-21 Holes in Flex Area	15-14
Figure 13-19 Microvia Voids	13-29	Figure 15-22 Holes in Transition Areas	15-15
Figure 13-20 Rim Void	13-30	Figure 15-23 Delamination	15-15
Figure 13-21 Rim Void	13-30	Figure 15-24 Examples of Good and Bad Cu Nesting and Stacking Designs	15-16
Figure 13-22 Rim Void	13-31	Figure 15-25 Insufficient Radius	15-17
Figure 13-23 Rim Void	13-31	Figure 15-26 Wrinkle in Coverlay	15-17
Figure 14-1 Misregistration	14-2	Figure 15-27 Wrinkling During Flexing	15-18
Figure 14-2 Adhesion Failure	14-4	Figure 15-28 Material Too Rigid for Depanelization	15-19
Figure 14-3 Skipping	14-6		

This Page Intentionally Left Blank

Table of Contents

Section 1

1	SCOPE	1-1
1.1	Purpose	1-1
1.2	Classification	1-1
1.3	Use of “Lead”	1-1
1.4	Abbreviations and Acronyms	1-1
1.5	Terms and Definitions	1-1
1.6	IPC-9121 Format Example	1-1
1.7	Guidelines for Effective Troubleshooting and Process Control	1-2
1.8	Parameter Analysis	1-3
1.8.1	Brainstorming	1-3
1.8.2	Process Audit	1-3
1.8.3	Initial Capability Study	1-3
1.8.4	Optimization	1-3
1.8.5	Confirmation and Final Capability Assessment	1-4
1.8.6	Parameter Control	1-4
1.8.7	Corrective Action Plan	1-4

This Page Intentionally Left Blank

Troubleshooting for Printed Board Fabrication Processes

Section 1 – Scope

1 SCOPE

This handbook provides problems, causes and possible corrective actions related to printed board manufacturing processes.

1.1 Purpose The purpose of this standard is to help designers, manufacturers and users of printed boards to troubleshoot fabrication processes to build electronics better.

1.2 Classification IPC standards recognize that electrical and electronic assemblies are subject to classifications by intended end-item use. Three general end-product classes have been established to reflect differences in manufacturability, complexity, functional performance requirements, and verification (inspection/test) frequency. It should be recognized that there may be overlaps of equipment between classes.

CLASS 1 General Electronic Products

Includes products suitable for applications where the major requirement is function of the completed assembly.

CLASS 2 Dedicated Service Electronic Products

Includes products where continued performance and extended life is required, and for which uninterrupted service is desired but not critical. Typically, the end-use environment would not cause failures.

CLASS 3 High Performance/Harsh Environment Electronic Products

Includes products where continued high performance or performance-on-demand is critical, equipment downtime cannot be tolerated, end-use environment may be uncommonly harsh, and the equipment must function when required, such as life support or other critical systems.

1.3 Use of “Lead” For readability and translation, the metallic element lead is always written as Pb.

1.4 Abbreviations and Acronyms See Appendix A for full spellings of abbreviations (including elements) and acronyms used in this standard.

1.5 Terms and Definitions Terms and definitions **shall** be in accordance with IPC-T-50 and 1.6.1 through 1.6.32.

1.6 IPC-9121 Format Example This document follows the general format seen below. In instances where there is no photo, a photo is not necessary or one could not be found. Potential test methods for discovery and verification are included in tables where applicable.

IPC encourages readers to submit process problems with photos as well as proposed causes and solutions to the IPC 7-24 Printed Board Process Effects Handbook Subcommittee. Submissions will be considered for document revisions.