



American National Standard for

Controlled Volume Metering

Pump Piping Guideline



American National Standard for
**Controlled Volume Metering
Pump Piping Guideline**

Sponsor
Hydraulic Institute, Inc.
www.Pumps.org

Approved December 2, 2021
American National Standards Institute, Inc.

American National Standard

Approval of an American National Standard requires verification by ANSI that the requirements for due process, consensus and other criteria for approval have been met by the standards developer.

Consensus is established when, in the judgement of the ANSI Board of Standards Review, substantial agreement has been reached by directly and materially affected interests. Substantial agreement means much more than a simple majority, but not necessarily unanimity. Consensus requires that all views and objections be considered, and that a concerted effort be made toward their resolution.

The use of American National Standards is completely voluntary; their existence does not in any respect preclude anyone, whether he has approved the standards or not, from manufacturing, marketing, purchasing, or using products, processes, or procedures not conforming to the standards.

The American National Standards Institute does not develop standards and will in no circumstances give an interpretation of any American National Standard. Moreover, no person shall have the right or authority to issue an interpretation of an American National Standard in the name of the American National Standards Institute. Requests for interpretations should be addressed to the secretariat or sponsor whose name appears on the title page of this standard.

CAUTION NOTICE: This American National Standard may be revised or withdrawn at any time. The procedures of the American National Standards Institute require that action be taken periodically to reaffirm, revise, or withdraw this standard. Purchasers of American National Standards may receive current information on all standards by calling or writing the American National Standards Institute.

Published By

Hydraulic Institute, Inc.
300 Interpace Parkway
Building A, 3rd Floor
Parsippany, NJ 07054-4406
www.Pumps.org

Copyright © 2021 Hydraulic Institute
All rights reserved.

No part of this publication may be reproduced in any form, in an electronic retrieval system or otherwise, without prior written permission of the publisher.

Printed in the United States of America

ISBN 978-1-954671-04-1



Recycled
paper

Contents

Page

Foreword	v
7.8 Piping considerations for metering pumps	1
7.8.1 Introduction	1
7.8.1.1 Purpose	2
7.8.1.2 Scope	2
7.8.2 Definitions	2
7.8.2.1 Check valves	2
7.8.2.2 Liquid end assembly	2
7.8.2.3 Multiplex pump	3
7.8.2.4 Accuracy and performance	3
7.8.2.5 Capacity, (Q)	3
7.8.2.6 Pressure, acceleration (P_{acc})	3
7.8.2.7 Pressure, discharge (p_d)	3
7.8.2.8 Maximum allowable working pressure (MAWP)	3
7.8.2.9 Pressure, friction loss (p_f)	3
7.8.2.10 Pressure, suction, maximum allowable ($p_{s,max}$)	3
7.8.2.11 NPIPR	3
7.8.2.12 NPSHR	3
7.8.2.13 Pressure, suction, rated suction	3
7.8.2.14 Pressure, total system discharge	4
7.8.2.15 Suction, flooded	4
7.8.2.16 Suction lift, static	4
7.8.2.17 Suction lift, total	4
7.8.2.18 Specific Gravity (s)	4
7.8.3 Metering pump principles	4
7.8.3.1 Characteristics	4
7.8.3.2 Net positive suction head available (NPSHA)/net positive inlet pressure available (NPIPA)	4
7.8.3.3 Net positive inlet pressure required (NPIPR)/Net positive suction head required (NPSHR)	5
7.8.4 Piping – general considerations	5
7.8.4.1 Materials	5
7.8.4.2 Support	5
7.8.4.3 Pressure ratings	5
7.8.4.4 Connections	6
7.8.4.5 Seismic considerations	6
7.8.4.6 Hydrostatic leak test	6
7.8.4.7 Environmental considerations	6

7.8.5	Piping – upstream (suction)	7
7.8.5.1	Single pump considerations	7
7.8.5.2	Multiplexing considerations (suction)	8
7.8.6	Piping – downstream (discharge).	9
7.8.6.1	Single pump considerations	9
7.8.6.2	Multiplexing considerations (discharge)	10
7.8.7	Application-specific considerations	10
7.8.7.1	Offgassing liquids.	10
7.8.7.2	Slurries	10
7.8.7.3	Viscous fluids	10
7.8.8	Maintenance considerations.	11
7.8.8.1	Equipment access	11
7.8.8.2	Backup systems	11
7.8.9	Accessories	11
7.8.9.1	Backpressure valves	11
7.8.9.2	Check valves	11
7.8.9.3	Pressure gauges/transducers, location and consideration.	11
7.8.9.4	Safety relief valves	12
7.8.9.5	Pulsation dampening	12
7.8.9.6	Inlet stabilizers	13
7.8.9.7	Injection quills/corporation stops	13
7.8.9.8	Flow measurement.	14
7.8.9.8.1	Calibration columns	14
7.8.9.8.2	Flowmeters.	15
7.8.9.9	Filters/strainers.	15
7.8.9.10	Valves.	15

Foreword [Not part of American National Standard (ANSI)]

Purpose and aims of the Hydraulic Institute

The purpose and aims of the Hydraulic Institute are to drive all Pump System stakeholders towards a sustainable future by:

- a) Advancing Solutions for Pump System Performance and Efficiency
- b) Developing Standards and Technical Resources
- c) Educating the Global Marketplace
- d) Advocating for the Industry

Purpose of Document:

Hydraulic Institute Standards and Guidelines may be published as American National Standards, and are adopted in the public interest to help eliminate misunderstandings between the manufacturer, the purchaser, and/or the user and to assist the purchaser in selecting and obtaining the proper product for a particular need. Use is completely voluntary and does not in any respect preclude a member from manufacturing or selling products which are not conforming.

Definition of Hydraulic Institute Standard

Quoting from Article XV, Standards, of the By-Laws of the Institute, Section B:

“An Institute Standard defines the product, material, process or procedure with reference to one or more of the following: nomenclature, composition, construction, dimensions, tolerances, safety, operating characteristics, performance, quality, rating, testing and service for which designed.”

Definition of Hydraulic Institute Guideline

A Hydraulic Institute Guideline is not normative. The guideline is tutorial in nature, to help the reader better understand the subject matter.

Comments from Users

Comments from users of this standard will be appreciated, to help the Hydraulic Institute prepare even more useful future editions. Questions arising from the content of this standard may be directed to the Technical Director of the Hydraulic Institute. If appropriate, the inquiry will then be directed to the appropriate technical committee for provision of a suitable answer.

Revisions

American National Standards of the Hydraulic Institute are subject to constant review, and revisions are undertaken whenever it is found necessary because of new developments and progress in the art. Errata or addenda may be issued to address limited changes. If no revisions are made for five years, the standards are reaffirmed using the ANSI canvass procedure.

Disclaimer

This document was prepared by a committee of the Hydraulic Institute and approved by following ANSI essential requirements. Neither the Hydraulic Institute, Hydraulic Institute committees, nor any person acting on behalf of the Hydraulic Institute: 1) makes any warranty, expressed or implied, with respect to the use of any information, apparatus, method, or process disclosed in this document or guarantees that such may not infringe privately

owned rights; 2) assumes any liabilities with respect to the use of, or for damages resulting from the use of, any information, apparatus, method, or process disclosed in this guideline. The Hydraulic Institute is in no way responsible for any consequences to an owner, operator, user, or anyone else resulting from reference to the content of this document, its application, or use.

This document does not contain a complete statement of all requirements, analyses, and procedures necessary to ensure safe or appropriate selection, installation, testing, inspection, and operation of any pump or associated products. Each application, service, and selection is unique with process requirements that shall be determined by the owner, operator, or its designated representative.

Units of measurement

Metric units of measurement are used, and corresponding US customary units appear in parentheses. Charts, graphs, and sample calculations are also shown in both metric and US customary units. Because values given in metric units are not exact equivalents to values given in US customary units, it is important that the selected units of measure to be applied be stated in reference to this standard. If no such statement is provided, metric units shall govern.

Consensus

Consensus for this American National Standard was achieved by use of the canvass method. The following organizations, recognized as having an interest in the standardization of pumps, were contacted prior to the approval of this revision of the standard. Inclusion in this list does not necessarily imply that the organization concurred with the submittal of the proposed standard to ANSI.

Kenneth Burkhardt
Leistriz Advanced Technologies Corp.

TRWD - Tarrant Regional Water District
Westinghouse Electric Co.

Committee list

Although this standard was processed and approved for submittal to ANSI by the canvass method, a working committee met many times to facilitate its development. At the time it was developed, the committee had the following members:

Chair – Pete Timpanelli, LEWA-Nikkiso America, Inc.
Vice-chair – Chris Distaso, PSG, a Dover Company

Committee Members

Douglas Purdy
Luis Ornelas

Company

Wanner Engineering, Inc.
Blacoh Fluid Control, Inc.

7.8 Piping considerations for metering pumps

7.8.1 Introduction

Metering pumps are described in detail in ANSI/HI 7.1-7.5 – *Controlled Volume Metering Pump for Nomenclature, Definitions, Application, and Operation*. Refer to this standard for general CVMP knowledge.

The success or failure of a metering pump depends heavily on the design of the system in which it is installed (pumping system). Adequately sized and installed piping, as well as the application of accessories, are key factors in ensuring that a metering pump achieves the performance levels as designed by the manufacturer.

The function of pump piping is to provide a conduit for the flow of liquid to and from a pump, while not adversely affecting the performance and reliability of the pump.

The function of suction piping and accessories is to provide adequate flow and pressure of liquid to the pump under all capacity settings, properly sized for the conditions achieved during the pulsating flow. For example, if the inlet (suction) piping is improperly designed it could fail to deliver adequate flow, resulting in fluid starvation and creating reduced pump performance or offgassing particularly for high vapor pressure liquids.

The function of discharge piping and accessories is to provide an adequate flow of liquid between the pump and the injection point. In addition, it must supply any required backpressure to the pump, contain appropriate system protective devices, control and minimize pulsations, and be adequately rated to withstand the maximum pressures encountered.

The piping must be properly designed to provide an environment conducive enough to allow the pump to achieve the manufacturer's ratings and to meet the customer's performance requirements (Figures 7.8.1a and 7.8.1b).

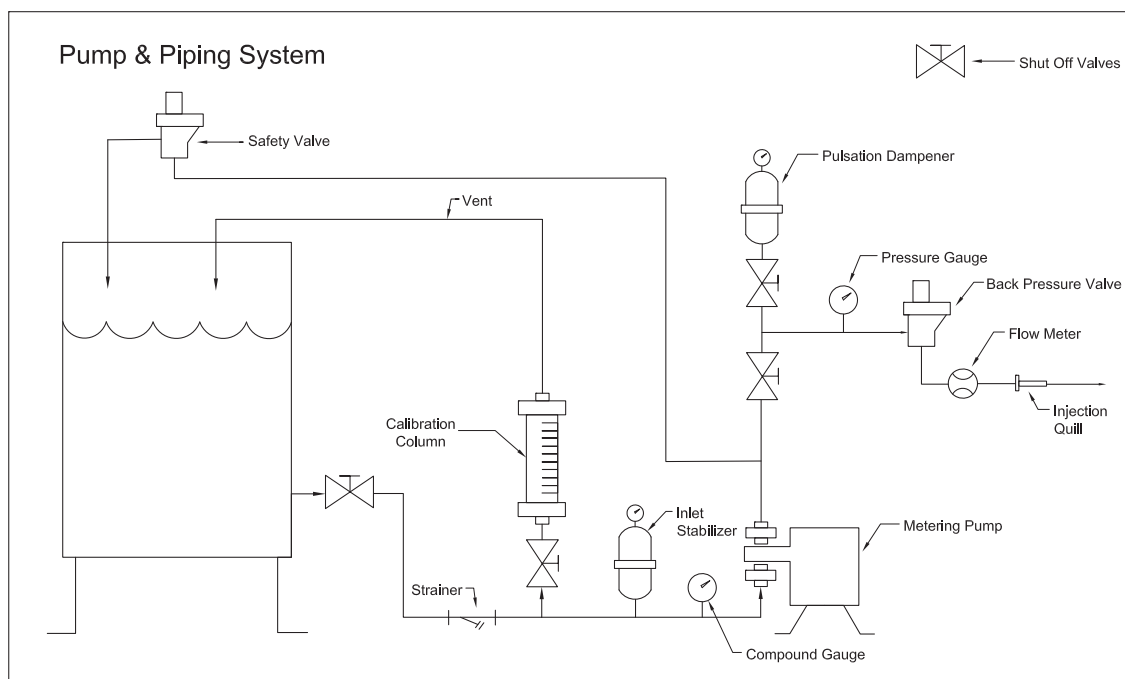


Figure 7.8.1a – Typical pump/piping