

**ANSI B11.6–2001 (R2012)**

*American National Standard for Machines –*

***Safety Requirements for Manual Turning  
Machines with or without Automatic Control***

Secretariat and Accredited Standards Developer:

**B11 Standards, Inc.  
POB 690905  
Houston, TX 77269**

**Approved: 17 December 2001  
Reaffirmed: 27 November 2012**

**American National Standards Institute**



**COPYRIGHT PROTECTED DOCUMENT**

**Copyright © 2012 by B11 Standards, Inc.**

**All rights reserved. Printed in the United States of America**

**No part of this publication may be reproduced in any form, in an electronic retrieval system or otherwise, without the prior written permission of B11 Standards, Inc.**

## **AMERICAN NATIONAL STANDARDS**

By approving this American National Standard, the ANSI Board of Standards Review confirms that the requirements for due process, consensus, balance and openness have been met by B11 Standards, Inc. (the ANSI-accredited standards developing organization).

American National Standards are developed through a consensus process. Consensus is established when substantial agreement has been reached by directly and materially affected interests. Substantial agreement means much more than a simple majority, but not necessarily unanimity. Consensus requires that all views and objections be considered, and that a concerted effort be made toward resolution. This process brings together volunteers and/or seeks out the views of persons who have an interest in the topic covered by this publication. While B11 Standards, Inc. administers the process and establishes procedures to promote fairness in the development of consensus, it does not write the document and it does not independently test, evaluate or verify the accuracy or completeness of any information or the soundness of any judgments contained in its standards or guidelines.

American National Standards are promulgated through ANSI for voluntary use; their existence does not in any respect preclude anyone, whether they have approved the standards or not, from manufacturing, marketing, purchasing, or using products, processes, or procedures not conforming to the standards. However, users, distributors, regulatory bodies, certification agencies and others concerned may apply American National Standards as mandatory requirements in commerce and industry.

The American National Standards Institute does not develop standards and will in no circumstances give an interpretation of an American National Standard. Moreover, no person shall have the right or authority to issue an interpretation of an American National Standard in the name of the American National Standards Institute. Requests for interpretations should be addressed to the Secretariat (B11 Standards, Inc.).

B11 Standards, Inc. makes no warranty, either expressed or implied as to the fitness of merchantability or accuracy of the information contained within this standard, and disclaims and makes no warranty that the information in this document will fulfill any of your particular purposes or needs. B11 Standards, Inc. disclaims liability for any personal injury, property or other damages of any nature whatsoever, whether special, indirect, consequential or compensatory, directly or indirectly resulting from the publication, use of, application or reliance on this document. B11 Standards, Inc. does not undertake to guarantee the performance of any individual manufacturer or seller's products or services by virtue of this standard or guide, nor does it take any position with respect to the validity of any patent rights asserted in connection with the items which are mentioned in or are the subject of this document, and B11 Standards, Inc. disclaims liability for the infringement of any patent resulting from the use of or reliance on this document. Users of this document are expressly advised that determination of the validity of any such patent rights, and the risk of infringement of such rights, is entirely their own responsibility.

In publishing or making this document available, B11 Standards, Inc. is not undertaking to render professional or other services for or on behalf of any person or entity, nor is B11 Standards, Inc. undertaking to perform any duty owed by any person or entity to someone else. Anyone using this document should rely on his or her own independent judgment, or as appropriate, seek the advice of a competent professional in determining the exercise of reasonable care in any given circumstances.

B11 Standards, Inc. has no power, nor does it undertake to police or enforce conformance to the requirements of this document. B11 Standards, Inc. does not certify, test or inspect products, designs, or installations for safety or health purposes. Any certification or other statement of conformance to any health or safety-related information in this document shall not be attributable to B11 Standards, Inc. and is solely the responsibility of the certifier or maker of the statement.

**NOTICE:** This American National Standard may be revised or withdrawn at any time. The procedures of the American National Standards Institute require that action be taken periodically to reaffirm, revise, or withdraw this standard. You may contact the Secretariat for current status information on this, or other B11 standards. Individuals interested in obtaining up-to-date information on standards can access this information at <http://www.nssn.org> (or by contacting ANSI). NSSN - A National Resource for Global Standards, provides a central point to search for standards information from worldwide sources and can connect those who seek standards to those who supply them.

Published by: B11 Standards, Inc., POB 690905, Houston, TX 77269-0905, USA

**Copyright © 2012** by B11 Standards, Inc.

**All rights reserved.** Printed in the United States of America

No part of this publication may be reproduced in any form, in an electronic retrieval system or otherwise, without the prior written permission of the publisher.

# TABLE of CONTENTS

PAGE

<b>FOREWORD (THIS FOREWORD IS NOT A PART OF THE REQUIREMENTS OF AMERICAN NATIONAL STANDARD B11.6-2001 R2012)</b> .....	<b>V</b>
<b>EXPLANATION OF THE FORMAT OF THE STANDARD</b> .....	<b>VII</b>
<b>INTRODUCTION</b> .....	<b>VIII</b>
<b>1 SCOPE</b> .....	<b>1</b>
MANUAL TURNING MACHINE.....	1
<b>2 NORMATIVE REFERENCES</b> .....	<b>1</b>
<b>3 DEFINITIONS</b> .....	<b>3</b>
<b>4 RESPONSIBILITY</b> .....	<b>7</b>
4.2 USER'S RESPONSIBILITY.....	8
4.3 PERSONNEL RESPONSIBILITY.....	10
<b>5 HAZARD CONTROL</b> .....	<b>11</b>
5.1 TASK AND HAZARD IDENTIFICATION.....	11
5.2 RISK ASSESSMENT / RISK REDUCTION.....	12
<b>6 DESIGN AND CONSTRUCTION</b> .....	<b>13</b>
6.1 GENERAL.....	13
6.2 COMPONENT SELECTION.....	13
6.3 MACHINE CONTROLS.....	13
6.4 DESCRIPTION OF MODES OF OPERATION.....	13
6.5 ELECTRICAL EQUIPMENT.....	14
6.6 HYDRAULIC AND PNEUMATIC SYSTEMS.....	14
6.7 EXTERNAL POWER SOURCES.....	16
6.8 STORED ENERGY.....	17
6.9 EXTERNAL INTERFERENCES.....	17
6.10 PERFORMANCE OF THE SAFETY-RELATED FUNCTION(S).....	18
6.11 MACHINE STARTING.....	18
6.12 STOP AND EMERGENCY STOP CONTROLS.....	18
6.13 OPERATOR CONTROL STATIONS.....	19
6.14 MANUALLY OPERATED CONTROL DEVICES.....	19
6.15 INDICATORS.....	21
6.16 ANTI-MOTION MECHANISMS OR COUNTER-BALANCE ON SLIDE MECHANISMS.....	21
6.17 POWER-OPERATED WORKHOLDING.....	22
6.18 COOLANT SYSTEMS.....	23
6.19 TOOL RETENTION.....	25
6.20 ELIMINATION OF, OR PROTECTION FROM, INHERENT HAZARDS.....	25
6.21 SAFEGUARDING.....	27
6.22 ACCESS TO MACHINE PARTS.....	28
6.23 STRUCTURAL INTEGRITY.....	29
6.24 NOISE.....	29
6.25 ERGONOMIC CONSIDERATIONS.....	29
6.26 ENERGY SUPPLY FAILURES.....	29
6.27 ERRORS OF FITTING.....	30
6.28 LIFTING OF MACHINE COMPONENTS.....	30
<b>7 LAYOUT, INSTALLATION, TESTING AND START-UP</b> .....	<b>30</b>
7.1 GENERAL.....	30

7.2	LAYOUT AND INSTALLATION.....	30
7.3	TESTING AND START-UP .....	31
<b>8</b>	<b>SAFEGUARDING .....</b>	<b>31</b>
8.1	GENERAL .....	31
8.2	GUARDS .....	32
8.3	SAFEGUARDING DEVICES.....	32
8.4	AWARENESS BARRIERS AND DEVICES .....	33
8.5	SAFEGUARDING AGAINST SPECIFIC HAZARDS .....	33
8.6	SAFE WORK PROCEDURES .....	34
8.7	PERFORMANCE OF THE SAFETY-RELATED FUNCTION(S) .....	34
<b>9</b>	<b>SET-UP, OPERATION AND MAINTENANCE.....</b>	<b>35</b>
9.1	GENERAL.....	35
9.2	MACHINE SET-UP PROCEDURES .....	35
9.3	SAFEGUARDING.....	36
9.4	MAINTENANCE .....	37
9.5	PERSONAL PROTECTIVE EQUIPMENT .....	38
9.6	TRAINING.....	38
9.7	SUPERVISION .....	39
9.8	INITIATION OF NORMAL OPERATION .....	39
	<i>Annex A - Figures.....</i>	<i>40</i>
	<i>(informative.....)</i>	<i>40</i>
	<i>Annex B (Informative)– List of significant hazards and major sources of these hazards associated with manually controlled turning machines .....</i>	<i>42</i>
	<i>Annex C (Informative)– Performance of the safety-related function(s).....</i>	<i>45</i>

## **Foreword (This Foreword is not a part of the requirements of American National Standard B11.6-2001 R2012)**

The primary objective of this standard is to eliminate or control hazards to personnel associated with manual turning machines with or without automatic control by establishing requirements for the construction, operation and maintenance of these machines. To accomplish this objective, responsibilities have been assigned to the supplier (e.g., manufacturer, rebuilder, reconstructor, installer, integrator), the user and personnel in the working environment. The words "safe" and "safety" are not absolutes. Safety begins with good design. While the goal of this standard is to eliminate injuries, it is recognized that risk factors cannot be practically reduced to zero in any human activity. This standard is not intended to replace good judgment and personal responsibility. Operator skill, attitude, training, job monotony, fatigue and experience are safety factors that must be considered by the user.

Manual turning machines and associated equipment technologies are continuously evolving. This standard reflects the most commonly used and time-tested state of the art at the time of its approval. The inclusion or omission of language relative to any evolving technology, either in the requirements or explanatory areas of this standard, in no way infers acceptance or rejection of such technologies.

### **EFFECTIVE DATE**

The following information on effective dates is informative guidance only, and not a normative part of this standard. This subcommittee recognizes that some period of time after the approval date on the title page of this document is necessary for suppliers and users to develop new designs, or modify existing designs or manufacturing processes in order to incorporate the new or revised requirements of this standard into their product development or production system.

This subcommittee recommends that suppliers complete and implement design changes for new machines and machinery systems within 30 months of the approval of this standard.

The subcommittee recommends that users evaluate whether existing machinery and machinery systems have acceptable risk within 30 months of the approval date of this standard using generally recognized risk assessment methods. If the risk assessment shows that modification(s) is necessary, refer to the requirements of this standard to implement risk reduction measures (risk reduction measures) for appropriate risk reduction.

Inquiries with respect to the application or the substantive requirements of this standard, and suggestions for its improvement, are welcomed and should be sent to B11 Standards, Inc., POB 690905, Houston, TX 77269, Attention: B11 Secretariat.

This standard was prepared by the B11.6 Subcommittee, processed and submitted for ANSI approval by the B11 Accredited Standards Committee on Safety Standards for Machines. Committee approval of this standard does not necessarily imply that all committee members voted for its approval. At the time this standard was reaffirmed as an American National Standard, the ANSI B11 Accredited Standards Committee was composed of the following member organizations:

Alan Metelsky, Chairman  
Barry Boggs, Vice-Chairman  
David Felinski, Secretary

<b>Organizations Represented</b>	<b>Name of Representative</b>	
	<b>Delegate</b>	<b>Alternate</b>
Aerospace Industries Association of America	Willard Wood	Lisa Goldberg / Chris Carnahan
Aluminum Extruders Council	Melvin Mitchell	Scott Burkett
American Society of Safety Engineers	Bruce Main, PE, CSP	George Karosas, PE, CSP
Association For Manufacturing Technology	Russell Bensman	Alan Metelsky
The Boeing Company	Don Nelson	Lance Chandler, PE
Canadian Standards Association	Elizabeth Rankin, CRSP	Walter Veugen
Deere & Co.	Gary Kopps	Scott Fowler
FDR Safety	Michael Taubitz	Flavius Brown

General Motors Corporation  
 Komatsu America Industries  
 Metal Powder Industries Federation  
 National Institute for Occupational Safety & Health  
 Occupational Safety & Health Administration  
 Omron Scientific Technologies Incorporated  
 Packaging Machinery Manufacturers Institute  
 Pilz Automation Safety, LP  
 Precision Metalforming Association  
 Presence-sensing Device Manufacturers Association  
 Property Casualty Insurers  
 Robotic Industries Association  
 Rockwell Automation  
 Safe-T-Sense  
 Sheet Metal & Air Conditioning Contractors Nat'l. Assn.  
 System Safety Society  
 Toyota Motor Manufacturing North America  
 International United Automotive Workers

Michael Douglas  
 George Schreck  
 Dennis R. Cloutier, CSP  
 Richard Current, PE  
 Kenneth Stevanus  
 Frank Webster  
 Charles Hayes  
 Michael Beerman  
 James Barrett, Jr. PhD  
 James V. Kirton  
 Stanford Brubaker  
 Jeffrey Fryman  
 Patrick Barry  
 Samuel Boytor  
 Michael McCullion  
 John Etherton, PhD, CSP  
 Barry Boggs  
 Tom Ford

James Landowski  
 Teresa Stillman  
 James Harris, PhD, PE  
 Robert Bell  
 Christopher Soranno  
 Maria Ferrante  
 Lee Burk  
 Bill Gaskin / Christen Carmigiano  
 Michael Carlson  
 John Russell, PE,CSP  
 Claude Dinsmoor  
 Michael Miller  
 Mark Witherspoon  
 Roy Brown  
 Rod Simmons, PhD  
 Todd Mills

At the time this standard was approved, the ANSI B11 ASC **B11.6 Subcommittee** had the following members who participated in the development of this revision:

<b>Name</b>	<b>Company</b>	<b>Title</b>
Steve Miller	Bridgeport	Chairman
John F. Bloodgood, PE	JFB Enterprises	Secretary
Tony Bratkovich, PE	AMT	
Lance Chandler	Boeing	
Dennis Coleman	Southwestern	
James Cordier	Hardinge	
Joe Felicijan	Clausing Industrial	
James Hoffman	Cincinnati-Milacron	
Roger Hopkins	Delphi Harrison	
Kent Johnson	Deere & Co.	
William Riley	U.S. Navy	
Carl Sharak	Liberty Mutual	

## Explanation of the format of the standard

This ANSI B11.6 – 2001 (R2012) standard is divided into parts formerly referred to as sections or chapters and now referred to as clauses, consistent with the current ANSI style manual. Major divisions of clauses are referred to as subclauses and, when referenced by other text in the standard, are denoted by the subclause number (e.g., see 5.1).

The standard uses a two-column format to provide supporting information for requirements. The material in the left column is confined to “Standard Requirements” only, and is so captioned. The right column, captioned “Explanatory Information” contains information that the writing Subcommittee felt would clarify the standard. This column should not be construed as being a part of the requirements of this American National Standard.

Operating rules (safe practices) are not included in either column of this standard unless they are of such nature as to be vital safety requirements, equal in weight to other requirements, or guides to assist in compliance with the standard.

As in all American National Standards, the term “SHALL” denotes a requirement that is to be strictly followed in order to conform to this standard; no deviation is permitted. The term “SHOULD” denotes a recommendation, a practice or condition among several alternatives, or a preferred method or course of action.

Similarly, the term “CAN” denotes a possibility, ability or capability, whether physical or causal, and the term “MAY” denotes a permissible course of action within the limits of the standard.

By convention, the B11 standards do not use the term “and/or” but instead, the term “OR” is used as an inclusive disjunction, meaning *one or the other or both*.

Suggestions for improvement of this standard will be welcome. They should be sent to B11 Standards, Inc., POB 690905 Houston, TX 77269, Attention: B11 Secretariat.

## Introduction

The primary purpose of every machine tool is to process parts. This is accomplished by the machine imparting process energy onto the workpiece. Inadvertent interference with, or accidental misdirection of the released energy during production, maintenance, commissioning and de-commissioning may result in injury.

The purpose of the ANSI B11 series of machine tool safety standards is to devise and propose ways to minimize risks of the potential hazards. This can be accomplished by an appropriate machine design, by restricting personnel and other individuals' access to hazard areas, and by devising work procedures to minimize personnel exposure to hazardous situations. This is the essence of the ANSI B11 series of safety standards.

The responsibility for the alleviation of these risks is divided between the equipment supplier, its user and its operating personnel, as follows (numbers in parentheses refer to the clause numbers in these standards which address that responsibility):

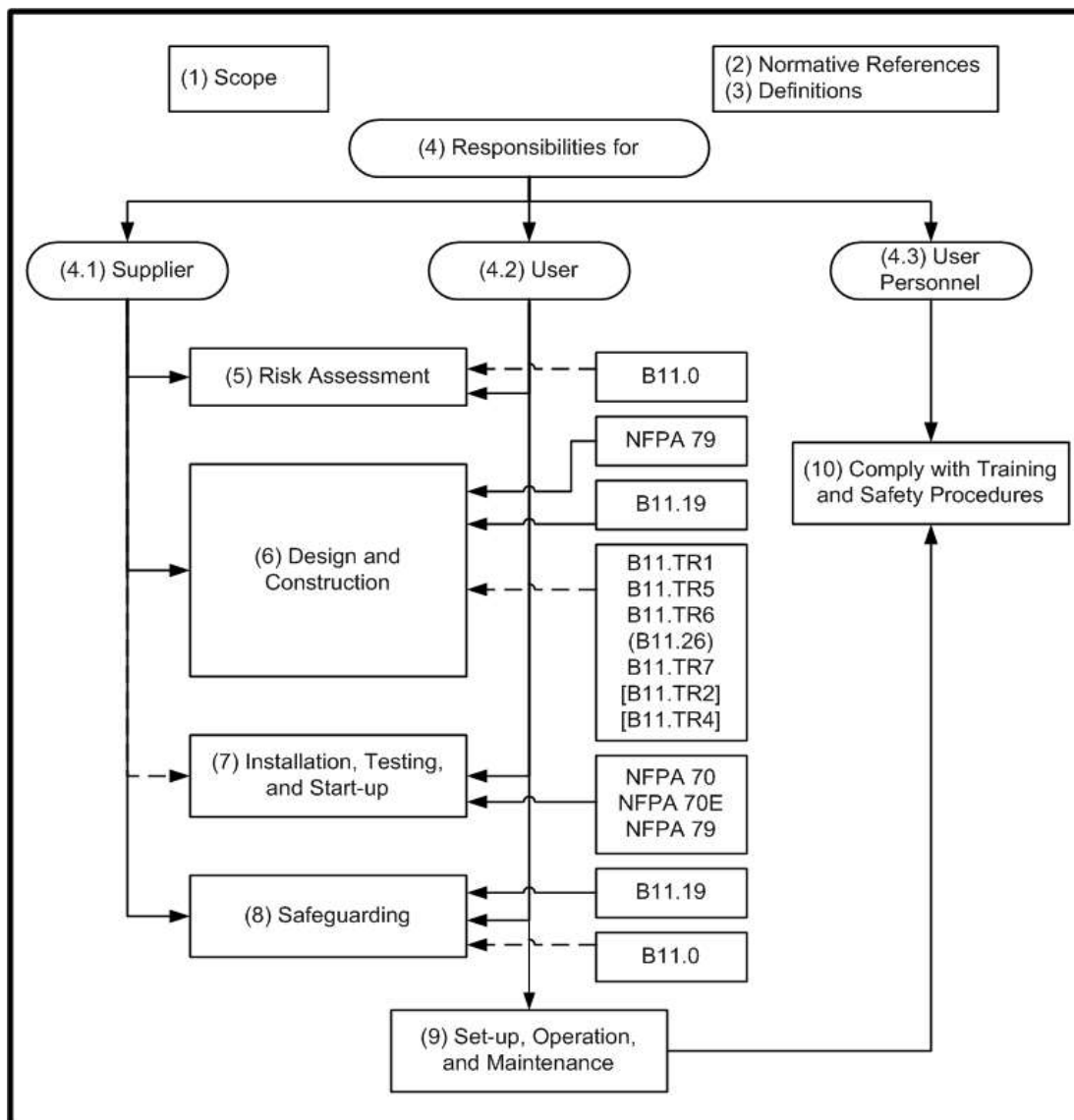


Figure 1 – Typical layout of B11 base standards showing the various responsibilities

Figure 1 (previous page) provides an overview of this standard and in particular, the responsibilities of and requirements for the supplier and user, including the user personnel. Numbers in parentheses denote the particular clause or subclause of the standard. A solid line between a block showing reference standard(s) and a block showing a normative clause denotes part of the requirements. A dashed line denotes an informative reference.

**Notes for Figure 1:**

- 1) Scope – Provides the boundaries or limits of the standard (i.e., what is/is not included in the coverage or requirements).
- 2) Normative references – Other standards which in whole or in part provide additional requirements when referenced in the normative text (i.e., left-hand column of clauses 4 – 9) of this standard.
- 3) Definitions – Terms used in this standard in a unique or particular manner, together with their definitions (terms used in the same context as are generally understood and commonly used in everyday English are not defined).
- 4) Responsibility – The general responsibilities of the supplier (builder), user, and the user personnel are listed in clause 4 together with which of the remaining clauses they have primary responsibility.
- 5) Risk assessment process – Clause 5 presents the general approach to risk assessment (see B11.0 [B11.TR3] for further explanation of hazard/task identification and risk assessment/risk reduction).
- 6) Design and construction – Generally, the supplier will be responsible for the requirements of clause 6, understanding that the user may add to or modify these requirements through the purchase agreement.
- 7) Layout, installation, testing and start-up – Although the requirements of clause 7 are predominantly the responsibility of the user, the supplier will normally provide assistance either directly (providing personnel) or indirectly (instruction materials).
- 8) Safeguarding – This is normally a shared responsibility between the supplier and user but often, either the supplier or the user will provide and/or meet most or even all of the requirements of clause 8.
- 9) Setup, operation and maintenance – The user is generally responsible for the requirements of clause 9, with possible assistance from the supplier for training.



*American National Standard for Machines –  
Safety Requirements for Manual Turning Machines with or  
without Automatic Control*

**STANDARDS REQUIREMENTS****1 Scope**

This standard specifies safety requirements for the design, construction, operation and maintenance (including installation, dismantling, and transport) of the general class of manually controlled horizontal and vertical spindle turning machines. Machines covered by this standard are intended to work metals and other man-made materials. This standard also applies to devices that are integral to the machine.

These machines may have automatic capability but may not be equipped with automatic part handling or bar-feed mechanisms nor automatic tool changing systems. This standard does not apply to NC Turning Machines where manual control is used only to set the machine for automatic production.

**Manual turning machine**

Manual turning machines utilize manually initiated steps to produce a part by rotating the workpiece against a stationary tool(s) such that the cutting force is from the workpiece and not the tool.

NOTE – The terms machine and machining as used throughout this standard mean turning machine.

**2 Normative references**

The following normative documents contain provisions that, through reference in this text, constitute provisions of this American National Standard. At the time of publication, the editions indicated were valid. All normative documents are subject to revision, and parties to agreements subject to this American National Standard should apply the most recent editions of the normative documents listed below.

**EXPLANATORY INFORMATION**

(Not part of the requirements of American National Standard for Machines – Safety Requirements for Manual Turning Machines with or without Automatic Control - ANSI B11.6-2001 R2012)

**E1**

Generally, chucks are not considered to be part of the machine.

See ANSI B11.22 for the safety requirements for Turning Centers and Automatic NC Turning Machines, and ANSI B11.13 for the safety requirements for Single- and Multiple-Spindle Automatic Bar and Chucking Machines.

**E2 Informative references**

The corresponding European Standard for the Safety of Manually Controlled Turning Machines With or Without Automatic Control is prEN 12840.